



Lower Cookham Road, SL6

£1,100,000

Waterview

A beautifully presented, four bedroom family home with pretty gardens overlooking this picturesque stretch of The Thames immediately upstream of Boulters Lock.

Lower Cookham Road runs between Maidenhead Bridge and Cookham.





Accommodation is made up of a spacious entrance hall, with turned staircase, leading to a bright 26' kitchen and family dining room with bi-fold doors to garden terrace. There is a further, formal dining room/reception room with doors to terrace and a large double reception room, also with access to the terrace.

On the first floor the large principal bedroom has a Juliette balcony overlooking the garden and en-suite bathroom. There are three further double bedrooms and a family bathroom.

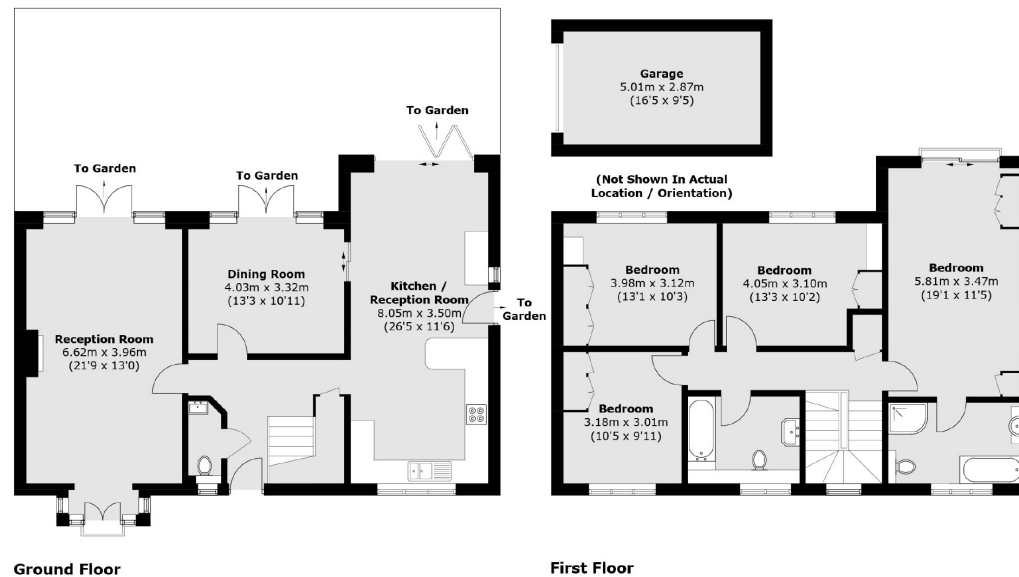
To the front of the house electric gates open onto a large paved driveway with parking for several cars and a garage and car port. To the rear a full width raised terrace overlooks the large, lawned garden with access to the river towpath on this picturesque stretch of The Thames.

Features

- Beautiful Home
- Four Bedrooms
- Three Reception Rooms
- River Views
- No Chain
- Large Garden



Lower Cookham Road, Maidenhead, SL6



Total area (approx.): 168.0 sq. m (1,808.2 sq. ft)
Garage area : 14.4 sq. m (155.0 sq. ft)

Contact

To arrange a viewing call our office on the number below or visit our website.



Energy Rating: D. We aim to make our particulars both accurate and reliable. However they are not guaranteed; nor do they form part of an offer or contract. If you require clarification on any points then please contact us, especially if you're traveling some distance to view. Please note that appliances and heating systems have not been tested and therefore no warranties can be given as to their good working order.

