



Bourneside Road, KT15

£359,950

Waterview



A bright and spacious two bedroom apartment set within this converted mill overlooking the river and Coxes Mill Pond from a large, south west facing balcony.

Coxes Lock is located off Bourneside Road in Addlestone.







Accommodation is made up of entrance hall leading to a large double reception room with French doors to a full width balcony. There is a modern integrated kitchen open plan onto dining area.

The principal bedroom has an en-suite shower room, with a further second bedroom and additional bathroom. The apartment has just been newly carpeted throughout and freshly painted. This exclusive gated development benefits from a resident's heated pool, well equipped gym, secure underground parking and well maintained communal gardens with access to the river. Offered with vacant possession.

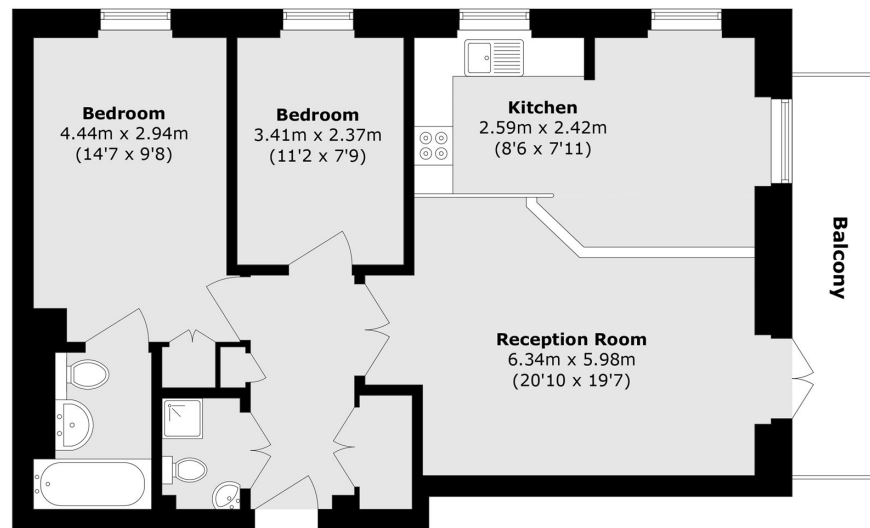
### Features

- Converted Mill
- Private Balcony
- River/Lake Views
- Swimming Pool
- No Chain
- Secure Parking





# Bourneside Road, Addlestone, KT15



Total area (approx.): 69.1 sq. m (743.7 sq. ft)  
Balcony area (approx.): 7.4 sq. m (79.6 sq. ft)

## Contact

To arrange a viewing call our office on the number below or visit our website.



Energy Rating: D. We aim to make our particulars both accurate and reliable. However they are not guaranteed; nor do they form part of an offer or contract. If you require clarification on any points then please contact us, especially if you're traveling some distance to view. Please note that appliances and heating systems have not been tested and therefore no warranties can be given as to their good working order.



