



Pelhams Walk, KT10
£1,750,000

Waterview


A beautifully presented, substantial family home set overlooking The Mole with fantastic river views and countryside beyond within this exclusive development.

Pelhams Walk is a private estate within the extensive range of quality restaurants and shops of Esher town centre.





Accommodation is made up of a large entrance hall with galleried landing leading to a generous double reception room and adjoining dining room which overlook the river. There is a modern kitchen, separate utility room, W.C., and integrated double garage.

On the first floor there are four good sized double bedrooms, one with en-suite and a further four piece family bathroom.

To the front of the house the landscaped front garden incorporates a driveway with parking leading to the double garage. To the rear the raised entertaining terrace overlooks tiered, west facing gardens with a large lawned area leading to the riverside with potential to moor an electric boat.

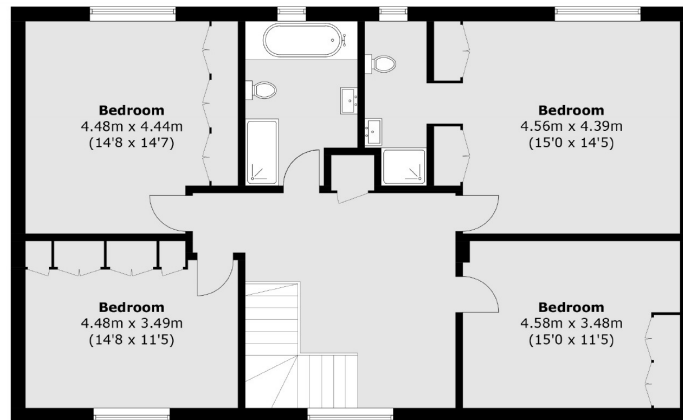
The house has approved planning permission to extend.

Features

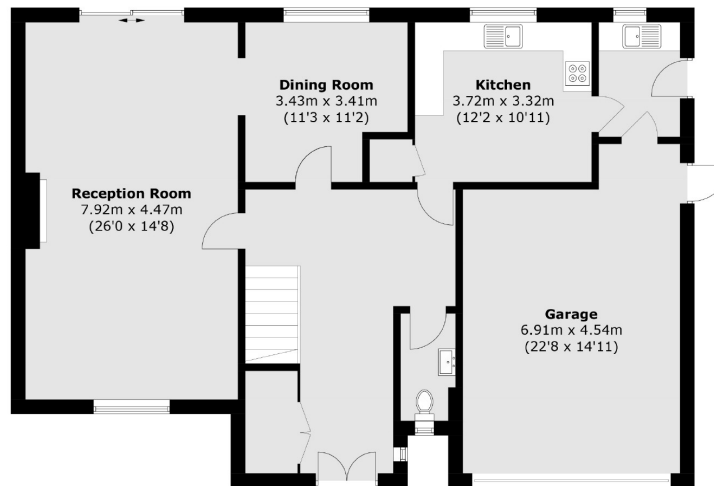
Riverside Home
Four Double Bedrooms
Fantastic Views
Approved Planning
West Facing
No Chain



Pelhams Walk, Esher, KT10



First Floor



Ground Floor

Total area (approx.): 232.5 sq. m (2,502.6 sq. ft)

Contact

To arrange a viewing call our office on the number below or visit our website.



Energy Rating: E. We aim to make our particulars both accurate and reliable. However they are not guaranteed; nor do they form part of an offer or contract. If you require clarification on any points then please contact us, especially if you're traveling some distance to view. Please note that appliances and heating systems have not been tested and therefore no warranties can be given as to their good working order.

