



Hythe End Road, TW19
£1,900,000

Waterview


An exceptional, newly built home of the finest quality set overlooking this beautiful stretch of The Thames with 115ft of river frontage and mooring.

Hythe End Road runs parallel to The Thames in the village of Wraysbury.





Accommodation is made up of a grand entrance hall with galleried landing leading to an impressive 38ft open plan living space incorporating polished oak flooring, a bespoke kitchen with feature marble island, dining area and full width bi-fold doors to the riverside terrace. Also on the ground floor is a formal reception room, cinema room, utility room and double bedroom and bathroom.

On the first floor there are two principal, river facing suites with walk-in wardrobes, dressing rooms, en-suite bathrooms and private balconies. The two further double bedrooms are serviced by a four piece family bathroom. The house is accessed via electric gates to a large driveway with parking for several cars and access to a double garage with stairs to upper storage room.

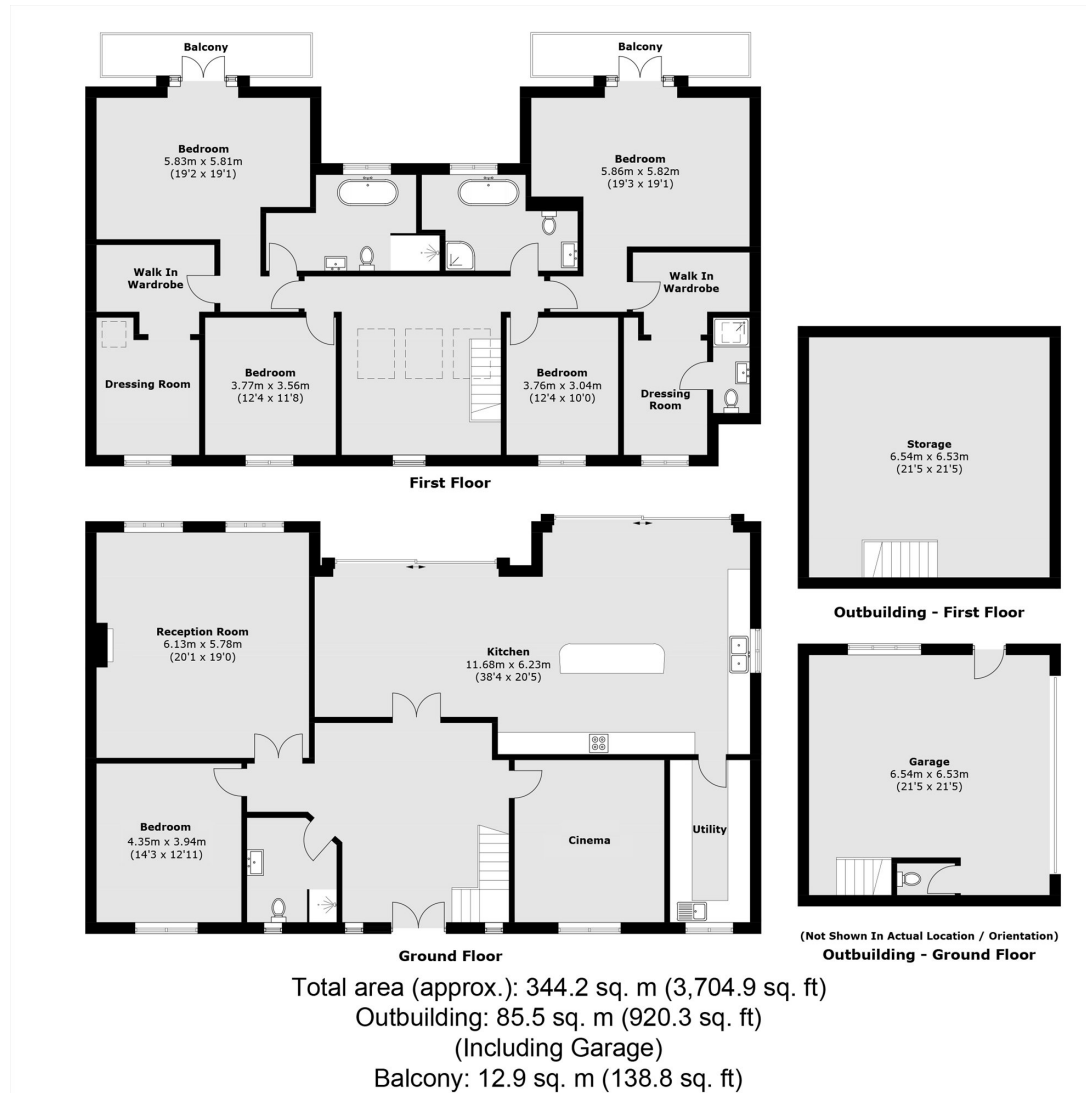
To the riverside the raised full width entertaining terrace faces south west and overlooks pretty lawned gardens which lead down to the riverside and moorings with far reaching views of this picturesque stretch of the river.

Features

Stunning House
3,700 sq ft
Five Bedrooms
Four Bathrooms
115ft River Frontage
Newly Built



Hythe End Road, Wraysbury, TW19



Contact

To arrange a viewing call our office on the number below or visit our website.



Energy Rating: . We aim to make our particulars both accurate and reliable. However they are not guaranteed; nor do they form part of an offer or contract. If you require clarification on any points then please contact us, especially if you're travelling some distance to view. Please note that appliances and heating systems have not been tested and therefore no warranties can be given as to their good working order.

