



Chertsey Meads, KT16

£475,000

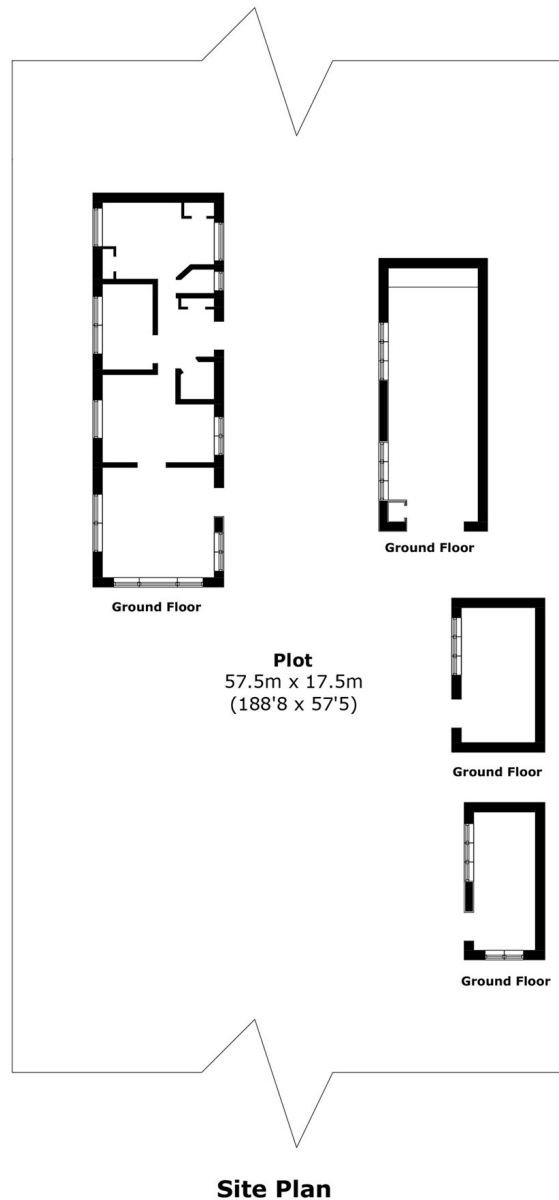
A rare opportunity to purchase this substantial leisure plot with a 65ft mooring and a selection of outbuildings including a static home, separate kitchen/dining lodge and two further storage sheds.

Dockett Eddy is located just 1.5 miles from Chertsey Town centre and train station and only two miles from the junction within the M25

Features

209 ft Plot
Accommodation For Six
65 Ft Mooring
Parking
Kitchen/Dining Room
W/C

Chertsey Meads, Chertsey, KT16



Total Plot area (approx.): 1006.2 sq. m (10,830.7 sq. ft)

Contact

To arrange a viewing call our office on the number below or visit our website.



Energy Rating: . We aim to make our particulars both accurate and reliable. However they are not guaranteed; nor do they form part of an offer or contract. If you require clarification on any points then please contact us, especially if you're traveling some distance to view. Please note that appliances and heating systems have not been tested and therefore no warranties can be given as to their good working order.