



The Island, KT7
£1,195,000

Waterview


A beautiful riverside detached home on the River Thames, situated on a private Island opposite the grounds of the historic Hampton Court Palace. The property is accessed via a gated footbridge and is in the heart of Thames Ditton village.

Thames Ditton station is a nearby with two trains per hour to London Waterloo via Surbiton and Wimbledon. Surbiton station is under 2 miles away with fast trains to Waterloo. The beautiful high street of Thames Ditton is just 0.2 miles away and offers restaurants, cafes and artisan shops.





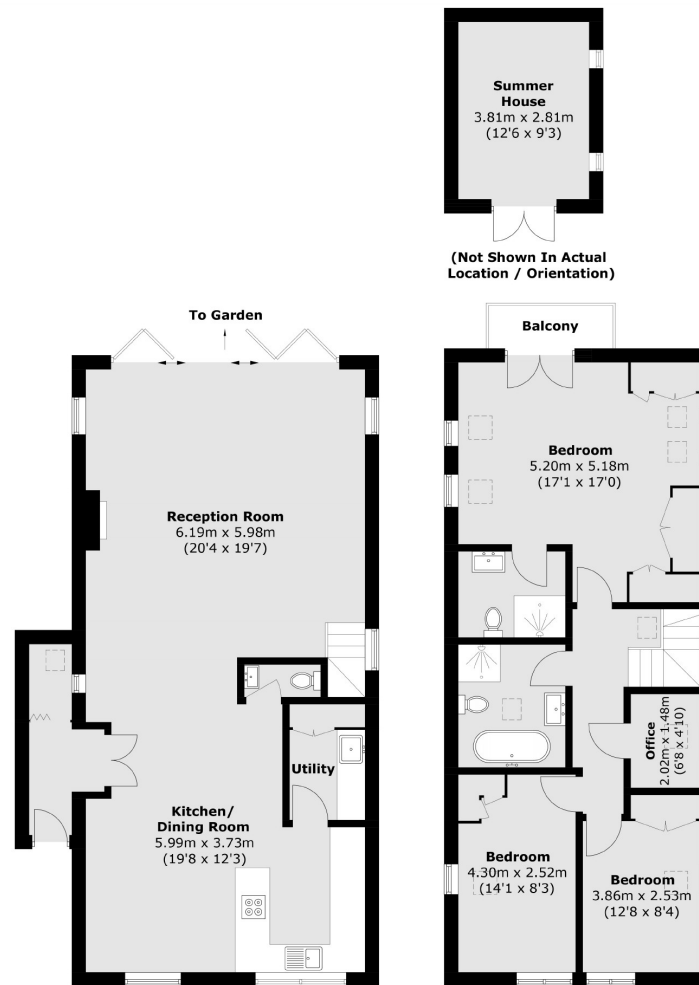
On the ground floor there is an immaculate open plan living/dining room with a smart American style kitchen and a log burner. The riverside garden is accessed via large bi-fold doors. In addition, there is a utility room with built in storage and a cloakroom. On the first floor is a master bedroom with plenty of useful built-in wardrobes and its own en-suite shower room. There is also a covered riverside balcony to enjoy the views of the river. There are also two further beautifully presented double bedrooms, a family bathroom, and a small office. The south facing riverside garden is spectacular, set over several levels to enjoy every aspect of its location. There are steps down to the generous private mooring and to the front of the property there is a further peaceful and secluded garden with a detached summer house/shed. The Island has 48 freehold houses with moorings and this property offers space for a vessel of up to 6.5 m with Riparian Rights.

Features

- Panoramic River Views
- Detached House With Office
- Three Bedrooms
- Two Bathrooms
- Gated Community
- Large Private Mooring



The Island, Thames Ditton, KT7



Ground Floor

First Floor

Total area (approx.): 150.2 sq. m (1,616.8 sq. ft)
Summer house: 10.9 sq. m (117.3 sq. ft)
Balcony area: 2.4 sq. m (25.8 sq. ft)

Contact

To arrange a viewing call our office on the number below or visit our website.



Energy Rating: C. We aim to make our particulars both accurate and reliable. However they are not guaranteed; nor do they form part of an offer or contract. If you require clarification on any points then please contact us, especially if you're traveling some distance to view. Please note that appliances and heating systems have not been tested and therefore no warranties can be given as to their good working order.



AMAZING CARS