



Ferry Lane, TW17
£1,250,000

Waterview


A beautiful, Victorian riverside home set within extensive gardens and 100ft of private river frontage overlooking this picturesque stretch of The Thames by D'Oyly Carte Island.

Ferry Lane is located off The Towpath at Shepperton, a short walk from the popular Thames Court pub with the ferry to Weybridge on the nearby riverbank.





Accommodation is made up of entrance hall leading to a stylish, country style kitchen which opens onto a family dining room with panoramic views and doors to garden. There is an impressive drawing room with arched french doors to garden. Also on the ground floor is a study/bedroom four, utility room and an artist's workshop/studio. Upstairs there are two en-suite double bedrooms both overlooking the river, one with balcony, and a further single bedroom and family bathroom.

The house is split into three properties and is approached via a gravel drive. The beautiful gardens of 1.8 acres are split between the three properties with Riverbank House enjoying it's own patio garden which opens out onto over 100ft of river frontage and mooring with breathtaking views.

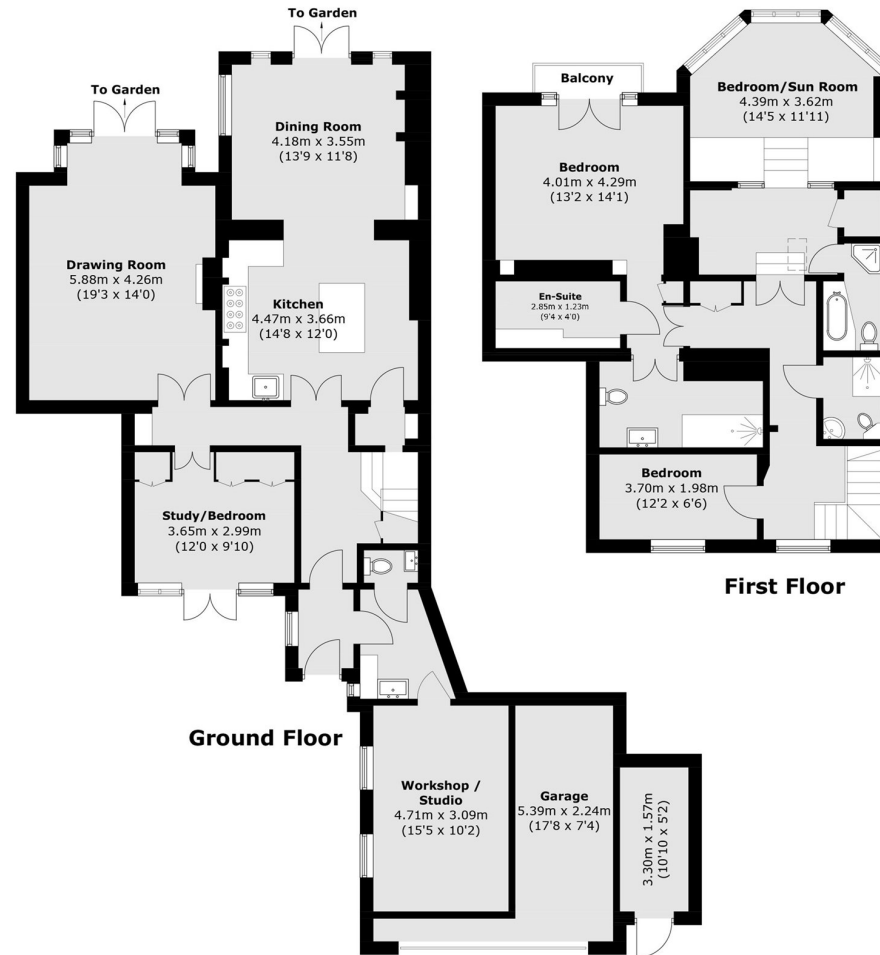
The house was historically inhabited by Arthur Sullivan, of Gilbert and Sullivan Fame.

Features

Historic House
Much Character
Extensive Gardens
100ft River Front
Double Garage
Excellent Location



Ferry Lane, Shepperton, TW17



Approx Internal Area: 191.1 sq. m (2,057.0 sq. ft)
Garage & External Room: 19.6 sq. m (211.0 sq. ft)
Total: 210.7 sq. m (2,268.0 sq. ft)

Contact

To arrange a viewing call our office on the number below or visit our website.



Energy Rating: E. We aim to make our particulars both accurate and reliable. However they are not guaranteed; nor do they form part of an offer or contract. If you require clarification on any points then please contact us, especially if you're traveling some distance to view. Please note that appliances and heating systems have not been tested and therefore no warranties can be given as to their good working order.

