

Hampton Village, TW12

£649,950

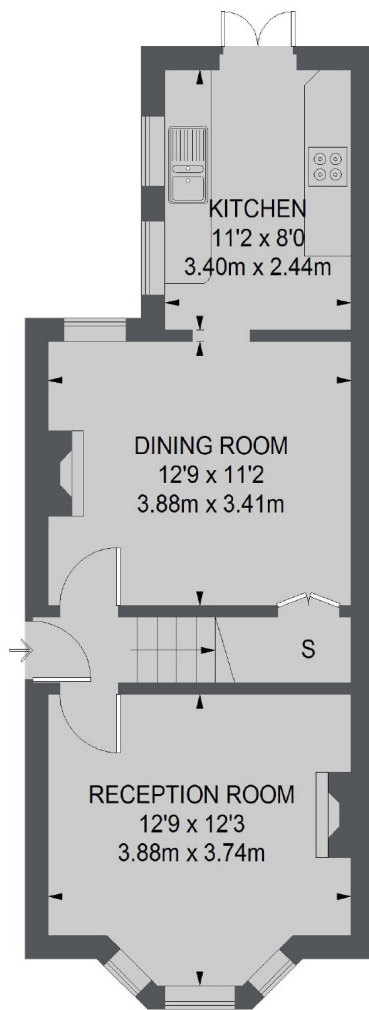
This semi-detached Victorian home is well presented throughout, we love the stylish family bathroom and cosy front reception room. There is a large private garden and also scope to extend to the rear.

Plevna Road is a popular road in the heart of the village with Hampton Green, Bushy Park and the River Thames all close by. There are excellent transport links with Hampton Train station and bus stops just a short walk away.

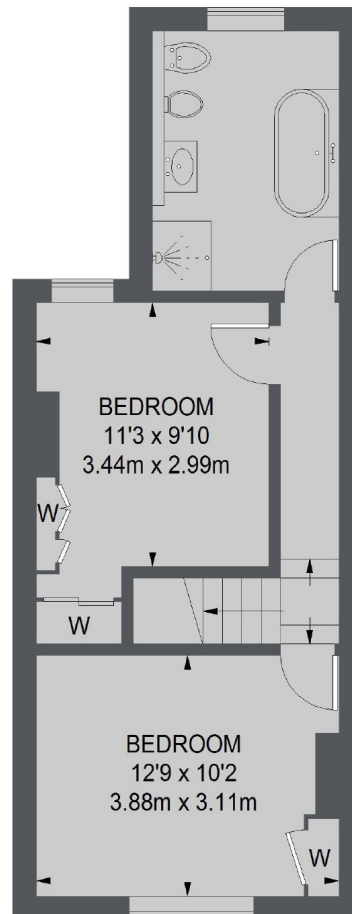
Features

Two Double Bedrooms
Victorian
Semi-Detached
Hampton Village
Immaculate Condition
Scope To Extend

Plevna Road, Hampton, TW12



GROUND FLOOR



FIRST FLOOR

TOTAL APPROX. FLOOR AREA 839 SQ. FT. (77.98 SQ. M.)

Contact

To arrange a viewing call our office on the number below or visit our website.



Energy Rating: . We aim to make our particulars both accurate and reliable. However they are not guaranteed; nor do they form part of an offer or contract. If you require clarification on any points then please contact us, especially if you're traveling some distance to view. Please note that appliances and heating systems have not been tested and therefore no warranties can be given as to their good working order.