



High Street, TW12

£1,225,000

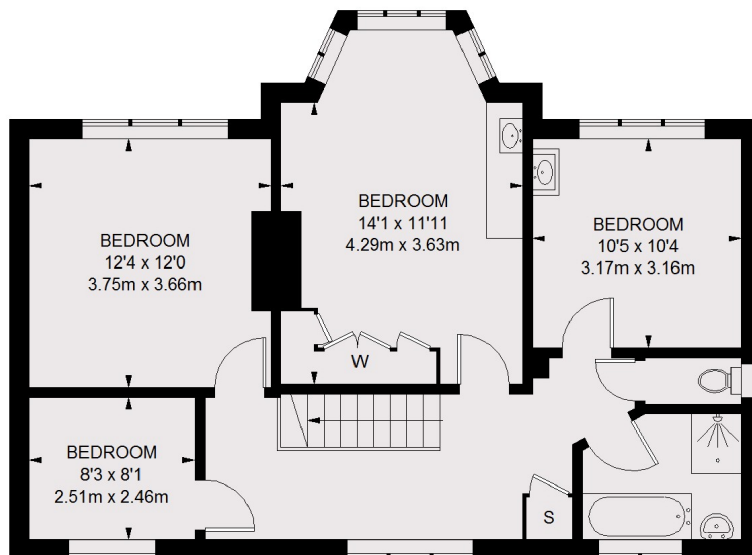
A generous four bedroom detached Arts and Crafts house that has been in the same family for 50 years. With huge scope to extend and a double width garden (measures 142 ft x 91ft) makes this a very special house.

Located in the heart of the old village of Hampton, this prime location is moments to the River Thames, Bushy Park and Hampton open air pool. A great location to raise a family.

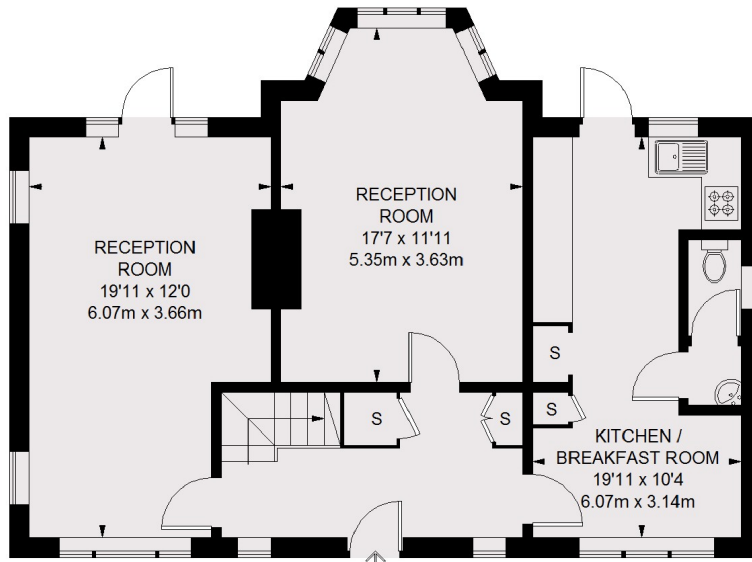
Features

Detached
Four Bedrooms
Large Garden
Prime Location
Scope To Extend
Arts And Crafts

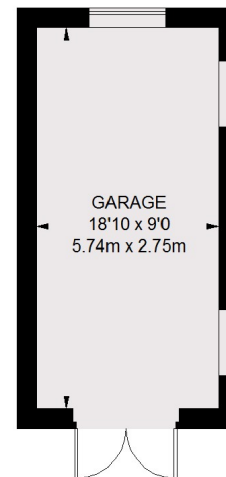
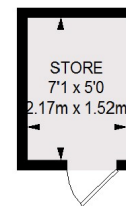
High Street, Hampton, TW12



FIRST FLOOR



GROUND FLOOR



(NOT SHOWN IN ACTUAL LOCATION / ORIENTATION)

TOTAL APPROX. FLOOR AREA = 1497 SQ. FT. (139.11 SQ. M.)
 GARAGE = 174 SQ. FT. (16.13 SQ. M.)
 STORE = 35 SQ. FT. (3.22 SQ. M.)

Contact

To arrange a viewing call our office on the number below or visit our website.



Energy Rating: . We aim to make our particulars both accurate and reliable. However they are not guaranteed; nor do they form part of an offer or contract. If you require clarification on any points then please contact us, especially if you're traveling some distance to view. Please note that appliances and heating systems have not been tested and therefore no warranties can be given as to their good working order.