



Tudor Avenue, TW12

£1,275,000

Dexters



Tudor Avenue, Hampton, TW12

A fantastic five bedroom semi detached house that has been fully extended and refurbished throughout. This property has all the ingredients for the perfect family home.

On the ground floor is open plan and incredibly family friendly. There is a double reception room featuring a lovely log burner, fireplace and bay window. The kitchen has been extended and includes a large island, space for a dining table, large pantry and bifold doors onto the garden.

The first floor has three bedrooms and a stylish family bathroom. The loft has been converted to provide two further bedrooms and an additional shower room. This has become the children's floor, however it could be easily changed to create a master suite if required.

Externally to the front is potential for off street parking and side access to the garden. The rear garden has been well landscaped providing a comfortable decked seating area, plenty of lawn, a patio area and a garage to the rear, which could easily be converted to a home office.

Centrally located in the centre of Hampton Village, everything you need is close by. Hampton train station, Waitrose, a choice of excellent schools, Carlise and Bushy Park are all a short walk away.

Features

- Five Bedrooms
- Two Bathrooms
- Downstairs W.C.
- Extended Kitchen
- Landscaped Garden
- Garage

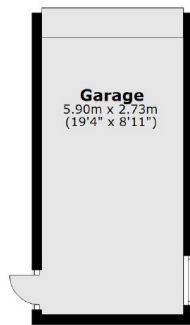




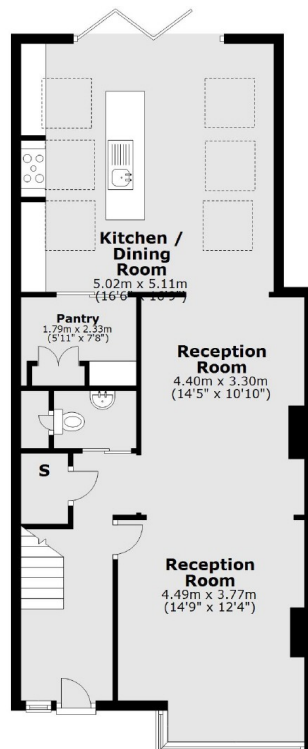
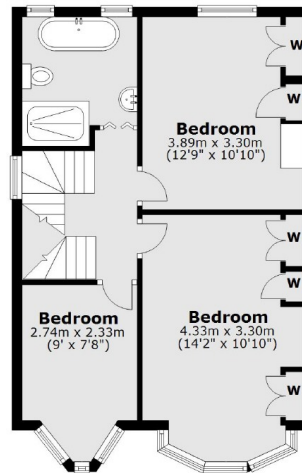


Tudor Avenue, Hampton, TW12

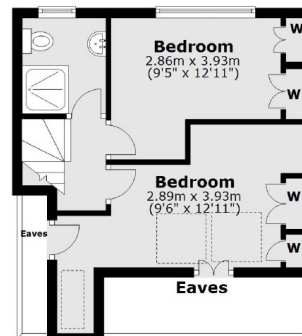
Ground Floor



First Floor



Second Floor



Main area: Approx. 153.0 sq. metres (1646.7 sq. feet)
Plus garages, approx. 16.1 sq. metres (173.3 sq. feet)

Dexters

Hampton
93 Station Road, Hampton,
TW12 2BD
Sales
020 8255 7777

Energy Rating: E. We aim to make our particulars both accurate and reliable. However they are not guaranteed; nor do they form part of an offer or contract. If you require clarification on any points then please contact us, especially if you're traveling some distance to view. Please note that appliances and heating systems have not been tested and therefore no warranties can be given as to their good working order.

RICS Regulated
Estate Agent
and Letting Agent

dexters.co.uk