



Kingswood Avenue, TW12

£3,750 Per calendar month

This incredible four double bedroom detached house which has been finished to a high standard throughout, offering two reception rooms, spacious kitchen/living area with bi-folding doors that lead onto a spacious private garden.

Kingswood Avenue is ideally placed for Hampton Mainline Station with its direct route to London Waterloo, village shops, popular local schools, Bushy Park and bus routes to Richmond and Kingston.

Features

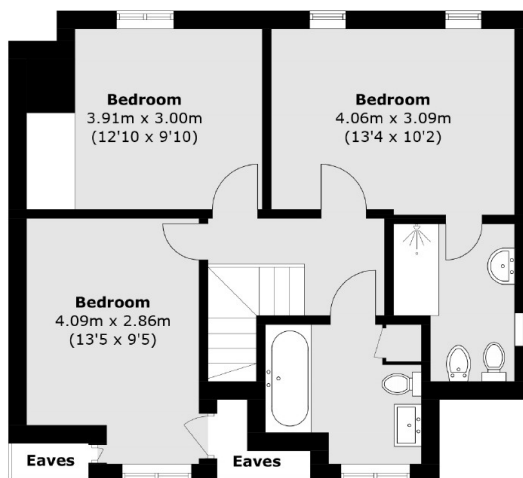
- Detached House
- Highly finished Throughout
- Modern Kitchen
- Private Garden
- Three Bathrooms
- Utility Room



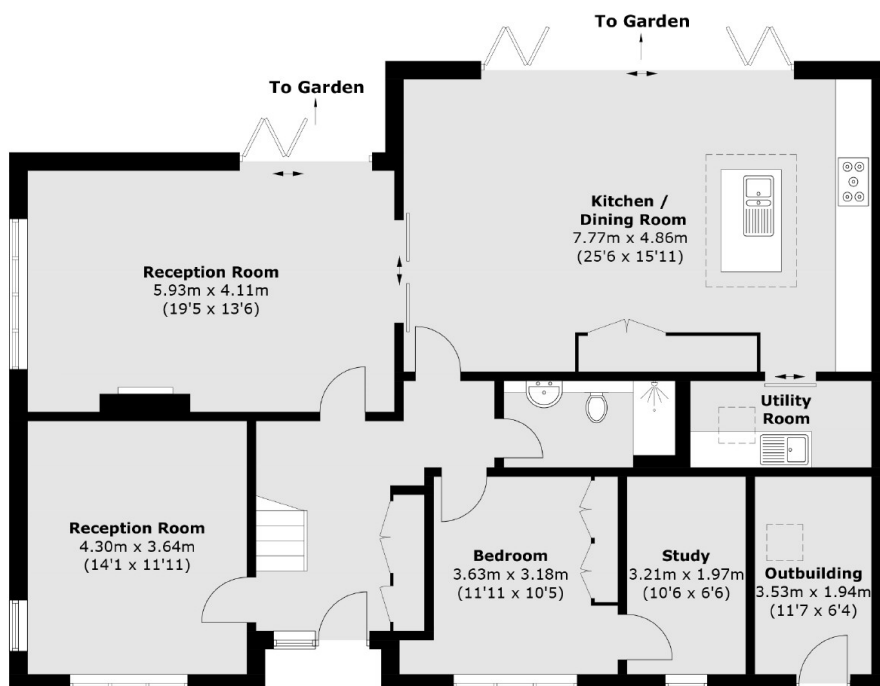
Kingswood Avenue, TW12



Kingswood Avenue, Hampton, TW12



First Floor



Ground Floor

Approx Internal Area: 174.6 sq. m (1,879.4 sq. ft)
(Excluding Eaves)

External Cupboard: 6.5 sq. m (67.0 sq. ft)

Total: 181.1 sq. m (1,946.4 sq. ft)