



## Hampton Road, TW12

£3,750 Per calendar month

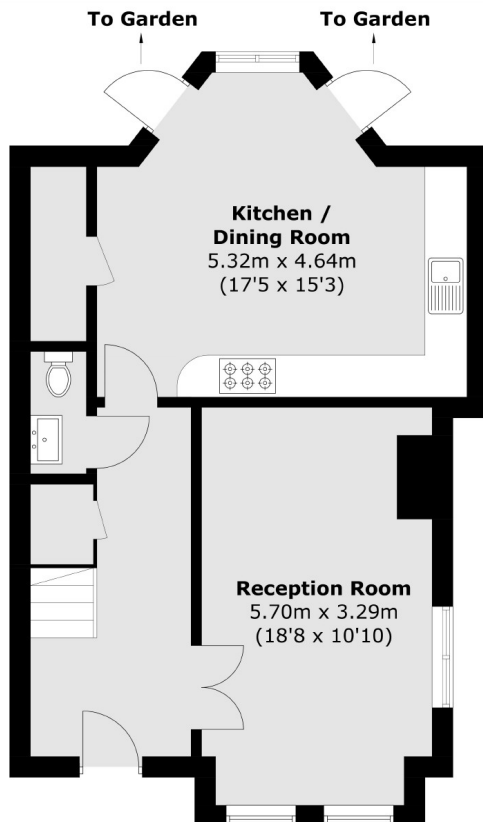
A stylish detached home in a gated community, Featherbed Villas offers two en-suite bedrooms, a sleek kitchen, underfloor heating, and a sunny south-facing garden. With solar panels, parking, and easy access to Fulwell Station and Bushy Park, it's luxury living in Hampton Hill.

Featherbed Villas is perfectly located just 0.3 miles from Fulwell Station and a short stroll from the beautiful Bushy Park, putting everything you need within easy reach.

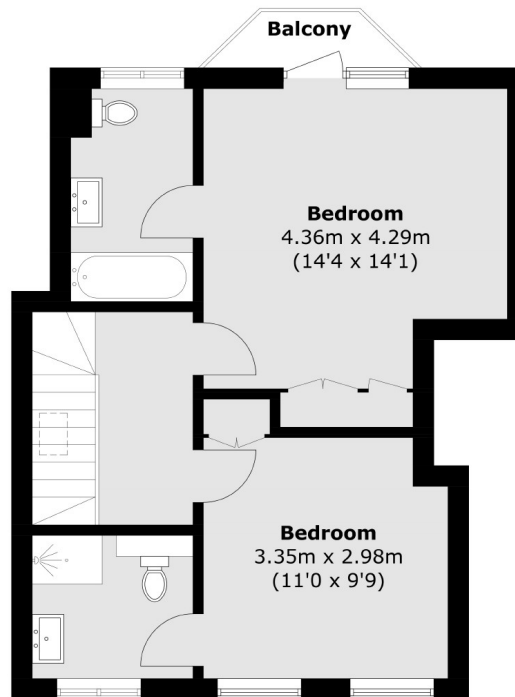
### Features

- Gated Development
- Two Bathrooms
- Utility Room
- Large Garden
- Two Double Bedrooms
- Allocated Parking Space

# Hampton Road, Hampton Hill, TW12



**Ground Floor**



**First Floor**

Total area (approx.): 105.9 sq. m (1,139.8 sq. ft)  
Balcony area (approx.): 1.8 sq. m (19.4 sq. ft)