



Spring Grove, TW12

£700,000

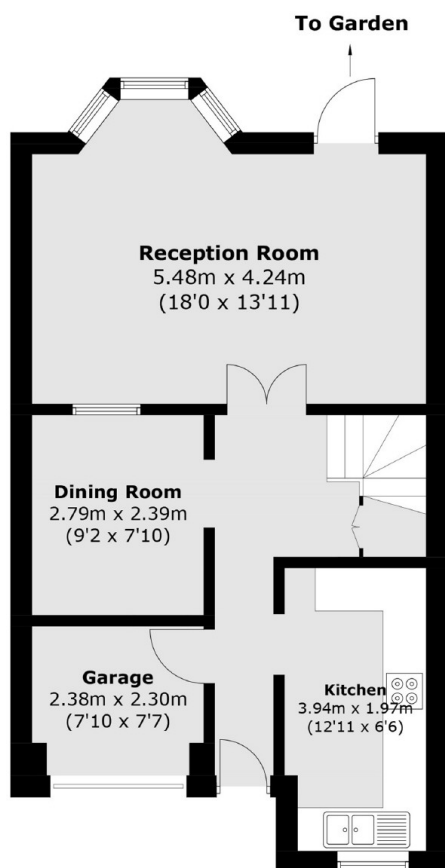
This is a lovely, three bedroom, two bathroom house with scope to further extend (subject to planning permission). These make great family homes or are also perfect to downsize to. Do drop us a call to arrange to view.

Located in the heart of Hampton Village, Spring Grove is a quiet cul-de-sac, moments to the shops and cafés, excellent local schools, and Hampton train station with its direct links to London Waterloo.

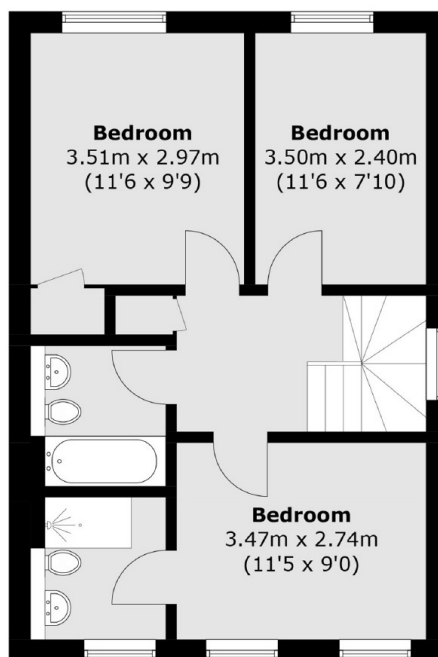
Features

- Three Bedrooms
- Two Bathrooms
- End Of Terrace
- Off Street Parking
- Scope To Loft (STPP)
- No Onward Chain

Spring Grove, Hampton, TW12



Ground Floor



First Floor

Total area (approx.): 97.1 sq. m (1,045.1 sq. ft)