



Church Street, TW12

£340,000

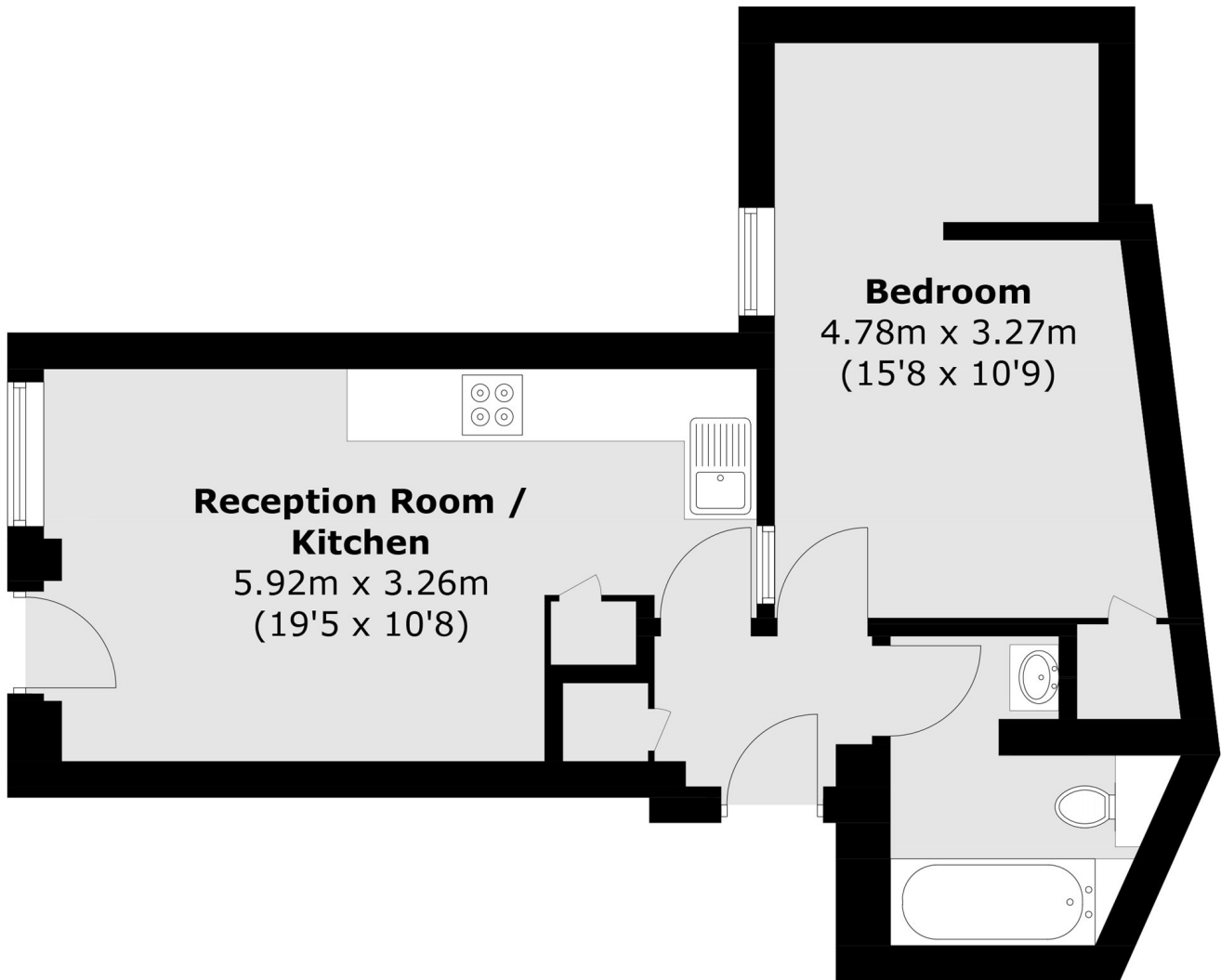
Positioned impeccably within the development, with views over the cobbled courtyard from your private patio, this one bedroom ground floor flat within Kingsley court is stylish throughout. Bike storage and a communal work from home space offer additional benefits.

Church Street is one of the most historic roads in Hampton and designated conservation area. Surrounded by other beautiful period properties you are within walking distance to Hampton Village, Hampton Station, the River Thames and Hampton Court Palace.

Features

- One Bedroom
- Ground Floor Flat
- Gated Development
- Private Patio Garden
- Bike Storage
- Communal WFH Space

Church Street,
Hampton, TW12



Total area (approx.): 41.5 sq. m (446.7 sq. ft)

Dexters

Hampton
93 Station Road
Hampton
TW12 2BD
Sales
020 8255 7777

Energy Rating: . We aim to make our particulars both accurate and reliable. However they are not guaranteed; nor do they form part of an offer or contract. If you require clarification on any points then please contact us, especially if you're traveling some distance to view. Please note that appliances and heating systems have not been tested and therefore no warranties can be given as to their good working order.

 **RICS** | Regulated
Estate Agent
and Letting Agent

dexters.co.uk