



Summer Avenue, KT8

£1,365,000

Dexters



Summer Avenue, KT8

A stunning family home that has been fully refurbished with four bedrooms, and a huge extended kitchen/family living space overlooking a well maintained west facing garden which leads onto The Ember with exceptional River Views.

The property features a well balanced ground floor layout, with a front reception room leading through to a substantial open-plan kitchen/dining space forming the heart of the home. This is complemented by a series of additional practical rooms to the side, including a cloakroom, bathroom and utility room, together providing a flexible and functional arrangement with internal access to the garage.

Upstairs, the first floor provides three well proportioned bedrooms, En-suite and a family bathroom, while the loft converted second floor offers a further spacious bedroom, creating comfortable accommodation across all levels.

Summer Avenue is located close to the boutiques, restaurants and cafés of Hampton Court Village as well as it's excellent transport links and access to the River Thames. Bushy Park and The Palace are also within easy reach.

Features

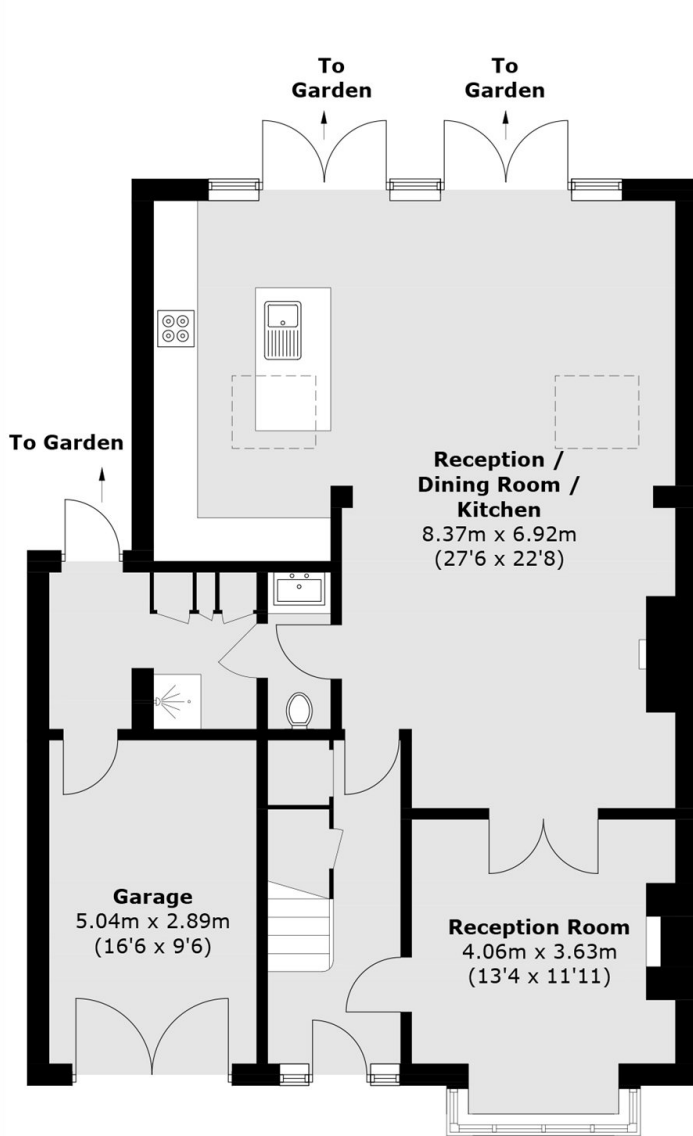
- Four Bedrooms
- Three Bathrooms
- Off Street Parking
- High Spec Finish
- West Facing Garden
- River Views



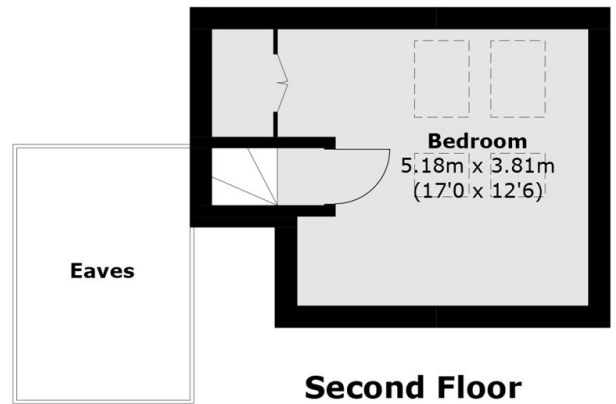




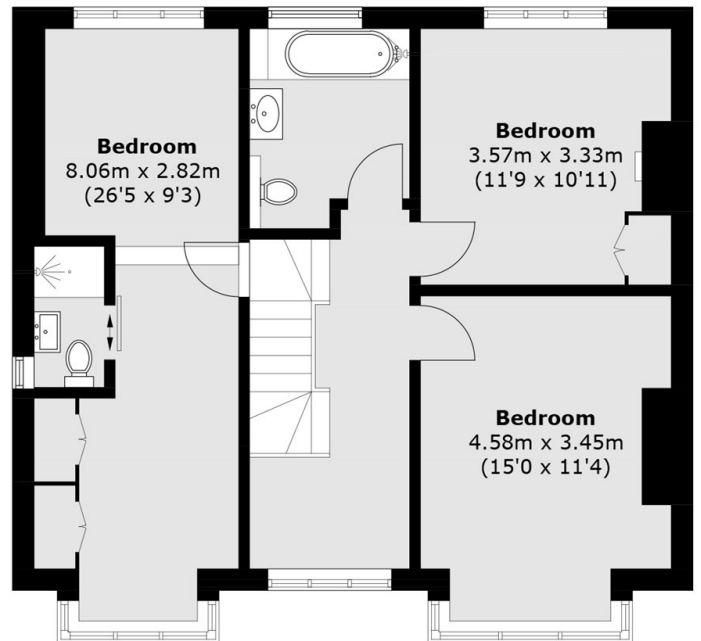
Summer Avenue, East Molesey, KT8



Ground Floor



Second Floor



First Floor

Total area (approx.): 183.8 sq. m (1,978.3 sq. ft)
(Including Garage / Excluding Eaves)