



Lower Sunbury, TW16

£1,350,000

Dexters



Woodlands Drive, Sunbury-On-Thames, TW16

A detached four bedroom house with off street parking and a large rear garden. The property is being sold with no forward chain and is perfect for a family looking for a forever home that they can put their own stamp on.

The ground floor has a light and spacious feel and offers a flexible layout with a dual aspect reception room, a second reception room with exposed beams, a study, kitchen, utility room and W.C.

On the first floor there is a generous master bedroom with lots of built in storage, a second bedroom with en suite shower room, two additional bedrooms and a family bathroom.

To the rear of the property there is a large private garden with a patio area and lawn. At the front of the property there is ample off street parking for at least six cars with the added bonus of a garage. This is not a property that you want to miss out on, contact us straight away to arrange a viewing.

Woodlands Drive is amazing location within Lower Sunbury with the River Thames close by. Houses rarely come up for sale on this exclusive road.

Features

- No Forward Chain
- Detached
- Four Bedrooms
- Two Bathrooms
- Large Rear Garden
- Garage

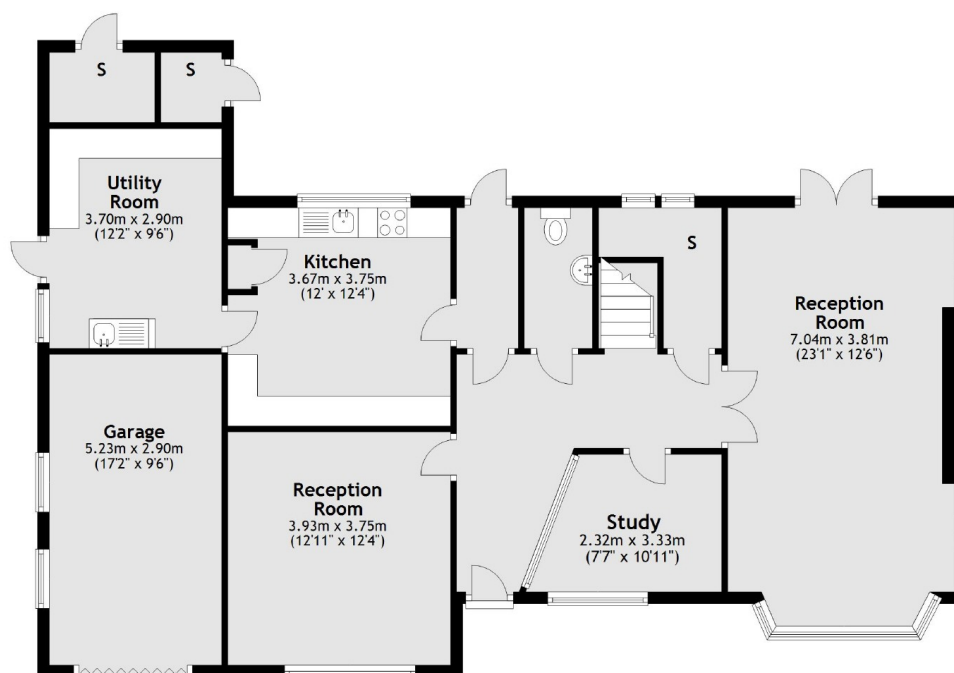




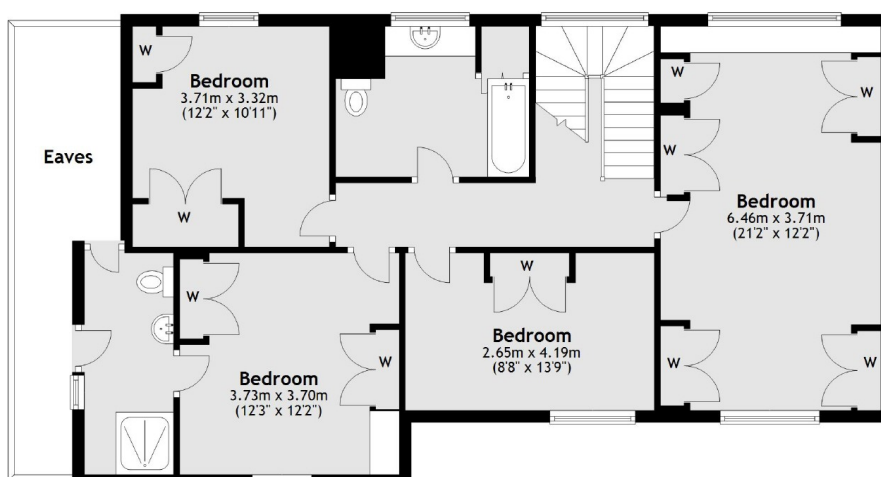


Woodlands Drive, Sunbury-On-Thames, TW16

Ground Floor



First Floor



Total area: approx. 205.1 sq. metres (2207.8 sq. feet)

Dexters

Sunbury
22 Thames Street, Sunbury-On-Thames, TW16 6AF

Sales
01932 781100

Energy Rating: . We aim to make our particulars both accurate and reliable. However they are not guaranteed; nor do they form part of an offer or contract. If you require clarification on any points then please contact us, especially if you're traveling some distance to view. Please note that appliances and heating systems have not been tested and therefore no warranties can be given as to their good working order.

RICS | Regulated
Estate Agent
and Letting Agent

dexters.co.uk