



## Vereker Drive, TW16

£1,050,000

An extended and modernised four bedroom detached house with off-street parking for four cars. This amazing property is smartly presented throughout. This is a perfect home for a family looking to upsize to a new home that they can move straight into.

Vereker Drive is a highly sought road within the popular Berg development. Sunbury Park, the local Village shops, Sunbury Station, the River Thames and the riverside pubs are all close by.

### Features

- Detached
- Four Bedrooms
- Two Bathrooms
- Utility Room
- Open Plan Kitchen
- Off-Street Parking





## Vereker Drive, TW16

On the ground floor there is a welcoming entrance hallway with a cloakroom, a generous front reception room, a utility room, an additional reception which is currently used as a playroom, a study and a kitchen, dining and family room room with bi-folding doors opening out on to the garden making this an ideal space for entertaining friends and family.

On the first floor there is a spacious master bedroom with an en suite bathroom and walk in wardrobe. There are three additional bedrooms and a family bathroom.

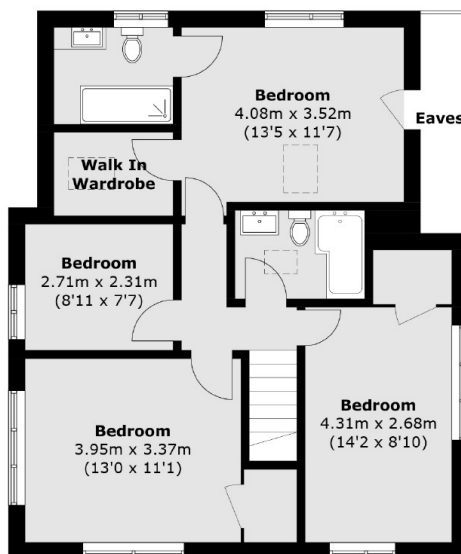
At the front of the property is ample off street parking for four to five cars and access to the garage. To the rear is a charming garden with a patio area, lawn and flower borders.



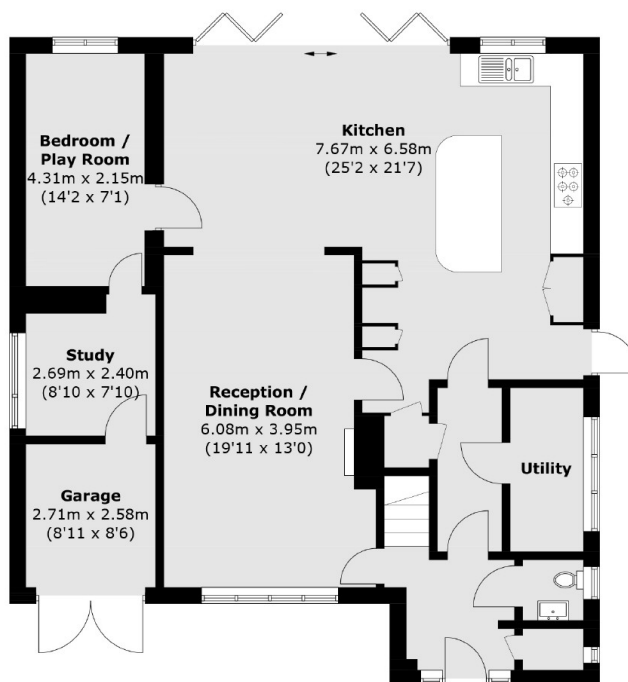




# Vereker Drive, Sunbury-On-Thames, TW16



**First Floor**



**Ground Floor**

Total area (approx.): 173.8 sq. m (1,870.7 sq. ft)  
(Including Garage / Excluding Eaves)