



**The Avenue, TW16**

**£2,300,000**

**Dexters**



## The Avenue, TW16

A stunning six bedroom, five bathroom detached family home with off-street parking and a large outbuilding which could be used as a gym, playroom, home office or annex. This beautiful house offers over 3,500 sq.ft of flexible accommodation spread over three floors.

On the ground floor there is a welcoming entrance hall, a light and spacious reception room which leads through to an amazing open plan kitchen and dining area and a second reception room. There is also the added bonus of a utility room and a downstairs W.C.

On the first floor there is an incredible master bedroom with walk in wardrobe and an en suite bathroom, there are three further bedrooms, including one with an en suite bathroom and a family bathroom. The loft has been converted to create two additional bedrooms both with en suite shower rooms.

To the rear of the house is a charming garden, the first section is mostly laid to lawn with mature trees, the rear section has a large outbuilding which is currently set up as a home gym, this could also be utilised as a home office, games room or annex. To the front of the house there is off-street parking for four/five cars.

### Features

The Avenue is the most prestigious road in Lower Sunbury. Everything the

Immaculately Presented

Detached

Six Bedrooms

Five Bathrooms

600 sq.ft Outbuilding

Off-Street Parking







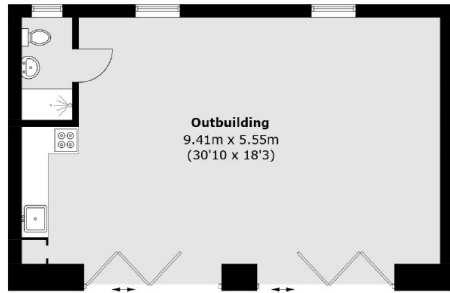




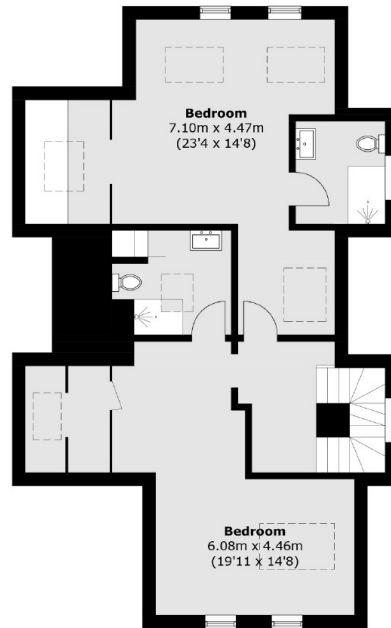




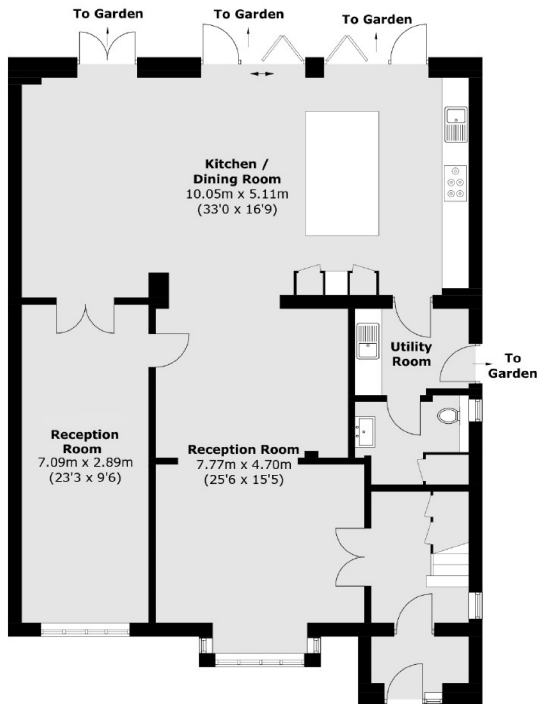
# The Avenue, Sunbury-On-Thames, TW16



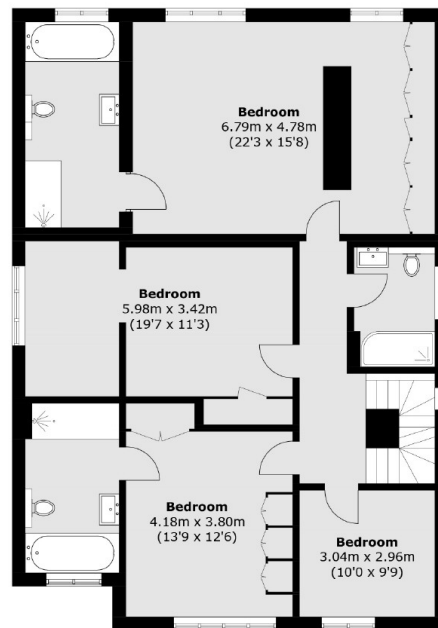
(Not Shown In Actual  
Location / Orientation)



**Second Floor**



**Ground Floor**



**First Floor**

Total area (approx.): 331.8 sq. m (3,571.5 sq. ft)  
Outbuilding area (approx.): 56.0 sq. m (602.8 sq. ft)