



## Southwood Avenue, KT2

£5,995 Per calendar month

This contemporary family home really has the wow factor with the kitchen/ family room being the hub of the home and a huge reception room.

Southwood Avenue is a desirable, quiet cul-de-sac in Coombe positioned between Wimbledon and Kingston and offers easy access to the A3. Not only are there excellent schools nearby but you have a choice of two golf clubs just around the corner.

### Features

- Detached House
- Gated
- Modern Eat-In Kitchen
- Further Utility Room
- Wooden Flooring
- Underfloor Heating



## Southwood Avenue, KT2

As you enter this property you immediately get a feel for the space which it offers. With a gorgeous eat-in kitchen with utility room and integrated appliances which includes a wine fridge and an American style fridge/ freezer and fantastic bi-folding doors great for hosting friends and family.

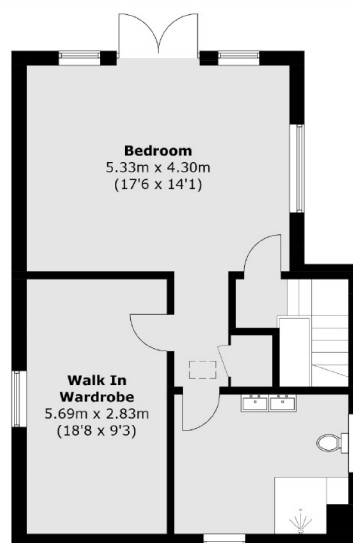
The reception room offers plenty of space for further dining and living and this leads out onto a beautifully maintained patio area and raised garden. The property is gated with off-street parking and a garage with direct access into the kitchen.

With five large bedrooms which all offer great storage. The master bedroom is on the top floor and its en suite bathroom has a separate shower and integrated sound system to make the most of those long relaxing baths. There are a further three bathrooms all of which are finished to a high specification.

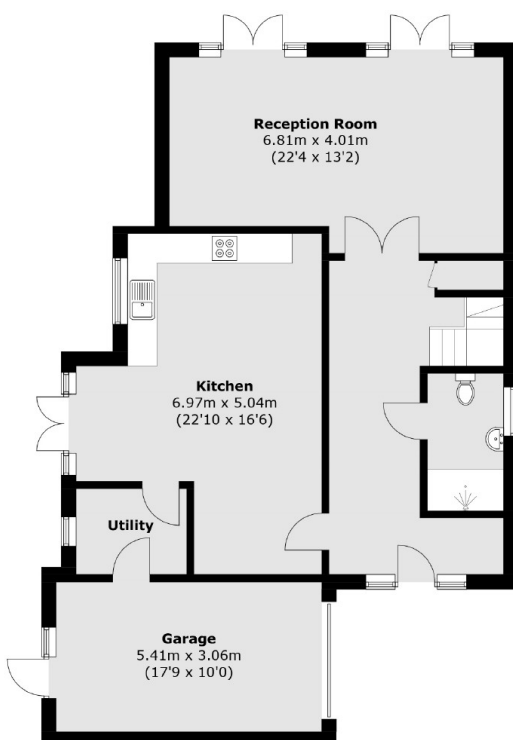




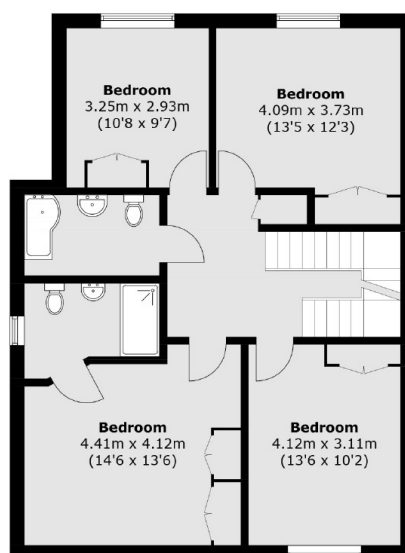
# Southwood Avenue, Kingston Upon Thames, KT2



**Second Floor**



**Ground Floor**



**First Floor**

Total area (approx.): 235.5 sq. m (2,534.8 sq. ft)