



Wheatfield Way, KT1

£890,000

This apartment has been carefully designed with every detail in mind including a generous open plan living space, large feature windows and a larger than average private terrace. There are two double bedrooms, both with fitted wardrobes and two bathrooms. Residents will enjoy 24 hour concierge, the exclusive use of the gymnasium, cinema room and beautiful communal grounds.

Situated in the heart of the lively market town of Kingston upon Thames, Royal Exchange is ideally located close to the River Thames and Kingston town centre.

Features

- Two Bedrooms
- Large Terrace
- Additional Balcony
- Luxurious Living
- Prime Central Location
- Concierge Service

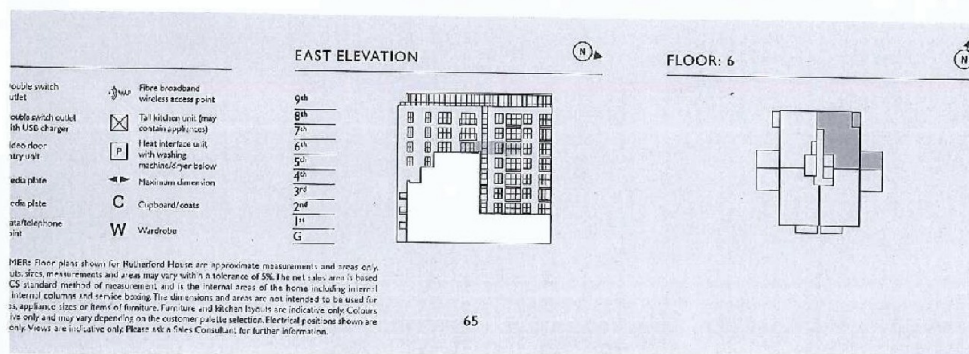
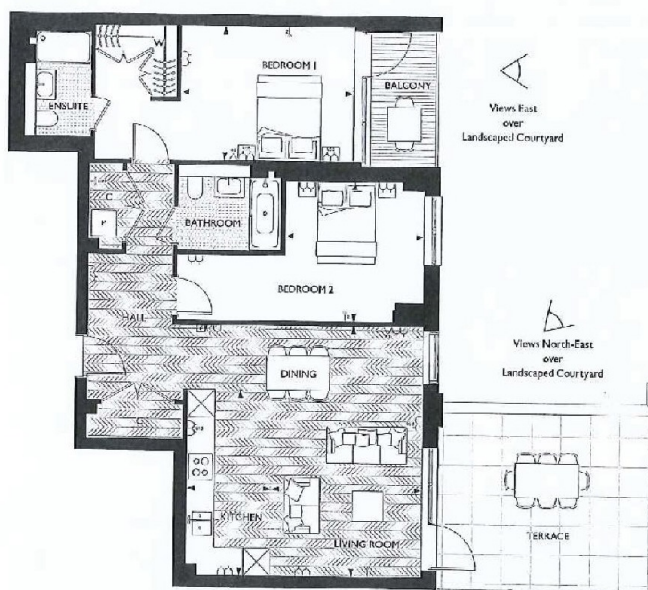
Wheatfield Way, Kingston Upon Thames, KT1

TWO BEDROOMS



APARTMENT: 77
FLOOR: 6

Living / Dining	3.5m x 5.9m	11' 7" x 19' 2"
Kitchen	2.0m x 4.3m	6' 7" x 14' 2"
Bedroom 1	4.1m x 3.1m	13' 5" x 10' 3"
Bedroom 2	3.3m x 3.3m	10' 8" x 10' 8"
TOTAL AREA	91.8 SQ M	988 SQ FT
Terrace	21.2 sq m	228 sq ft
Balcony	5.4 sq m	58 sq ft



Dexters

Kingston
4 Wood Street
Kingston Upon Thames
KT1 1TG

Sales
020 8546 3555

Energy Rating: B. We aim to make our particulars both accurate and reliable. However they are not guaranteed; nor do they form part of an offer or contract. If you require clarification on any points then please contact us, especially if you're traveling some distance to view. Please note that appliances and heating systems have not been tested and therefore no warranties can be given as to their good working order.

RICS Regulated Estate Agent and Letting Agent

dexters.co.uk