



Tudor Drive, KT2

£1,100,000

Offered with no onward chain is this impressive five bedroom, semi-detached family home, presented in excellent condition throughout. The property features generously sized bedrooms and a fabulous open plan kitchen, living and dining space with bi-fold doors leading onto the garden. In addition, there is a self-contained annex complete with its own kitchen and shower room.

Tudor Drive is a highly sought after road, ideally located within walking distance of the amenities in Ham and the lush open spaces of Richmond Park. Both Kingston and Richmond town centres are also within easy reach. The area is renowned for its excellent school catchment, offering highly regarded primary and secondary education options.

Features

- Five Bedrooms
- Three Bathrooms
- Large Open Plan Rear
- Separate Reception Room
- No Onward Chain
- Self-Contained Annex



Tudor Drive, KT2

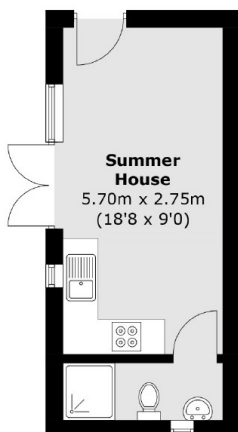
On the ground floor, to the front, is a lovely reception room currently used as a dining room but equally suitable as a private sitting room. To the rear is the impressive, extended kitchen/dining/sitting room, a modern, open plan space perfect for entertaining. There is also a contemporary shower room with WC on this level.

On the first floor are three generous bedrooms and a smart, modern family bathroom. The second floor offers the final two bedrooms, with the largest benefiting from its own en suite bathroom.

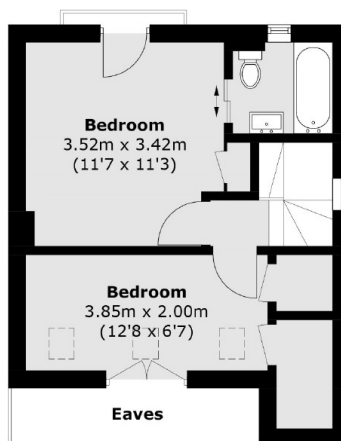
Outside, the front features a large garden, mainly paved with mature borders. To the rear is a good size, south west facing garden with a large lawn and access to the self-contained annex.



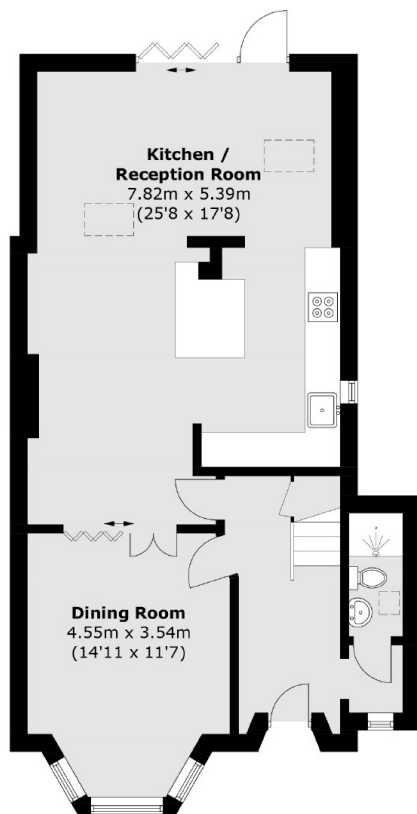
Tudor Drive, Kingston Upon Thames, KT2



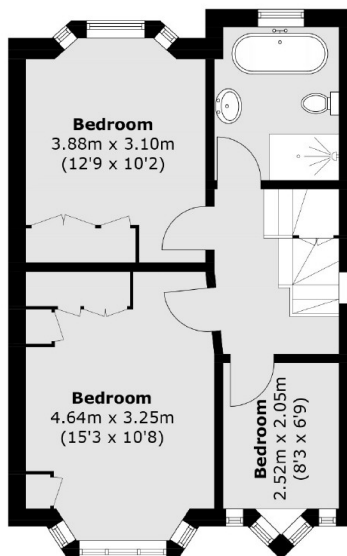
(Not Shown In Actual
Location / Orientation)



Second Floor



Ground Floor



First Floor

Total area (approx.): 143.0 sq. m (1,539.2 sq. ft)
Summer House: 19.0 sq. m (204.5 sq. ft)
(Excluding Eaves)