



Surbiton, KT6

£485,000

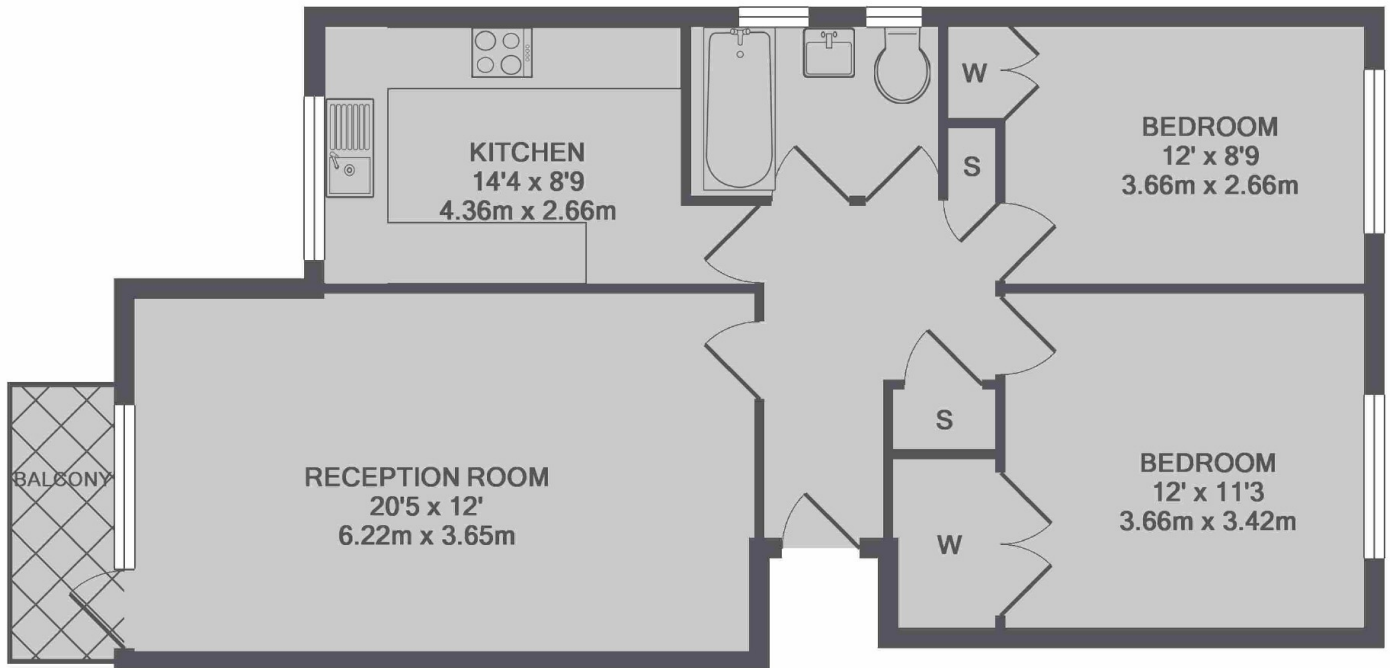
A first floor apartment that has been recently refurbished. With a large reception room, two double bedrooms, a private balcony and lots of storage, there is plenty of space for you and all of your belongings.

A cosy cul-de-sac to come home to, Mountcombe Close is just up the road from Surbiton High Street with its shops, bars and mainline train station.

Features

First Floor
Ample Storage
Large Reception Room
Two Double Bedrooms
Balcony
Great Location

Mountcombe Close, Surbiton, KT6



TOTAL APPROX. FLOOR AREA 751 SQ.FT. (69.8 SQ.M.)

Contact

To arrange a viewing call our office on the number below or visit our website.



Energy Rating: E. We aim to make our particulars both accurate and reliable. However they are not guaranteed; nor do they form part of an offer or contract. If you require clarification on any points then please contact us, especially if you're traveling some distance to view. Please note that appliances and heating systems have not been tested and therefore no warranties can be given as to their good working order.