

Surbiton, KT6

£450,000

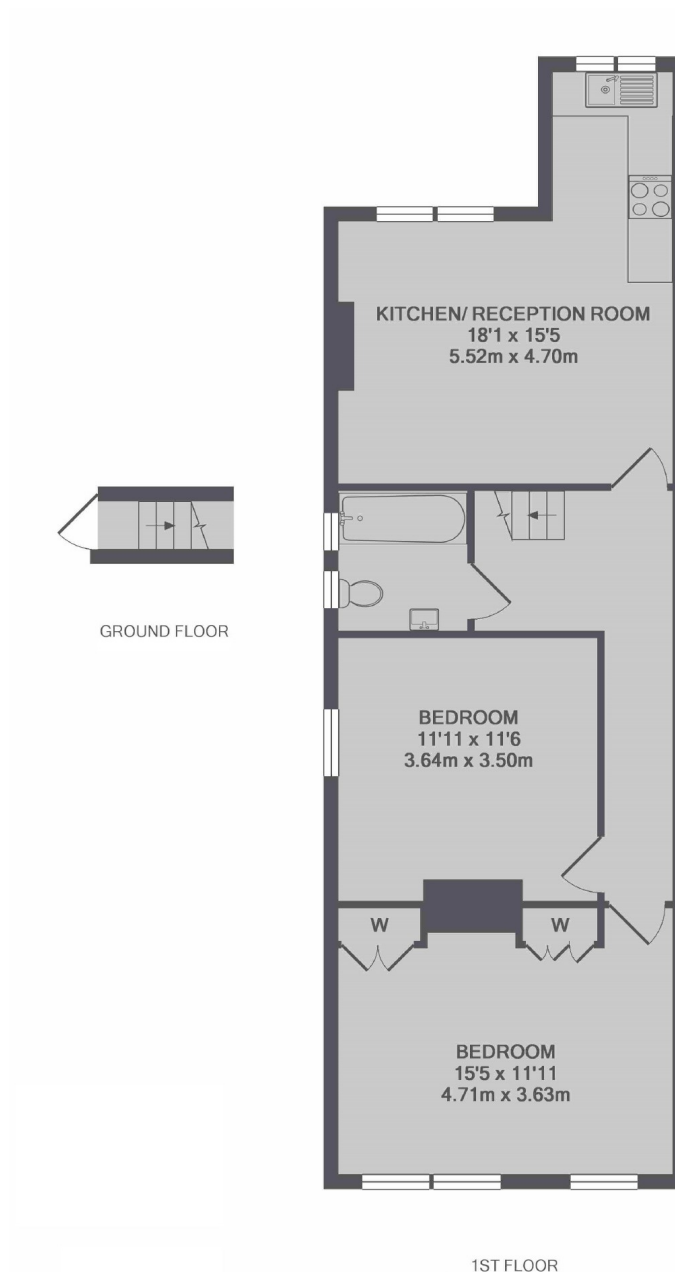
This first floor Victorian maisonette offers an open plan kitchen/reception room, a modern kitchen, two double bedrooms and the luxury of its own private rear garden - book in a viewing now.

Bond Road is conveniently located approximately a mile away from both Tolworth and Surbiton train stations and their popular and busy High Streets.

Features

- Victorian Maisonette
- Open Plan Lounge/ Kitchen
- Two Double Bedrooms
- Private Garden
- Great Location
- Ample Storage

Bond Road, Surbiton, KT6



TOTAL APPROX. FLOOR AREA 714 SQ.FT. (66.3 SQ.M.)

Contact

To arrange a viewing call our office on the number below or visit our website.



Energy Rating: E. We aim to make our particulars both accurate and reliable. However they are not guaranteed; nor do they form part of an offer or contract. If you require clarification on any points then please contact us, especially if you're traveling some distance to view. Please note that appliances and heating systems have not been tested and therefore no warranties can be given as to their good working order.