



## Rupert Gardens, SW9

£425,000

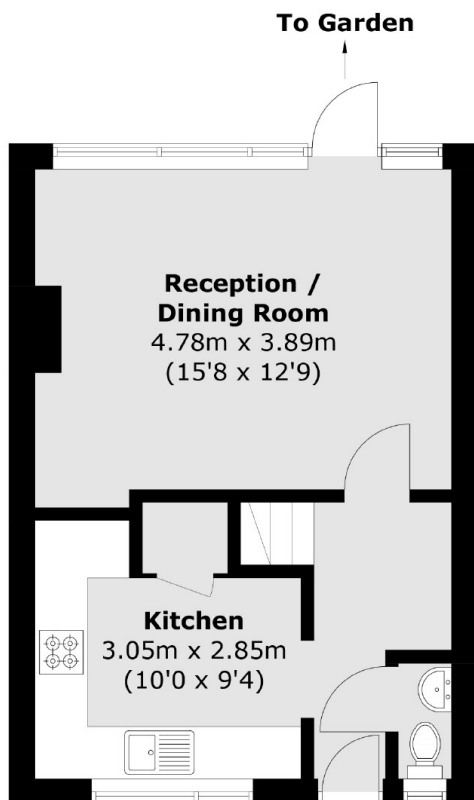
A large, three double bedroom split level maisonette. The property comprises of three double bedrooms, a family bathroom, living / dining room and a separate kitchen. The property includes a private garden and is being sold chain free.

Rupert Gardens is situated within easy reach of local shops, bars and restaurants while the green space of Wyck Gardens is moments away along with Loughborough Junction and Brixton Station.

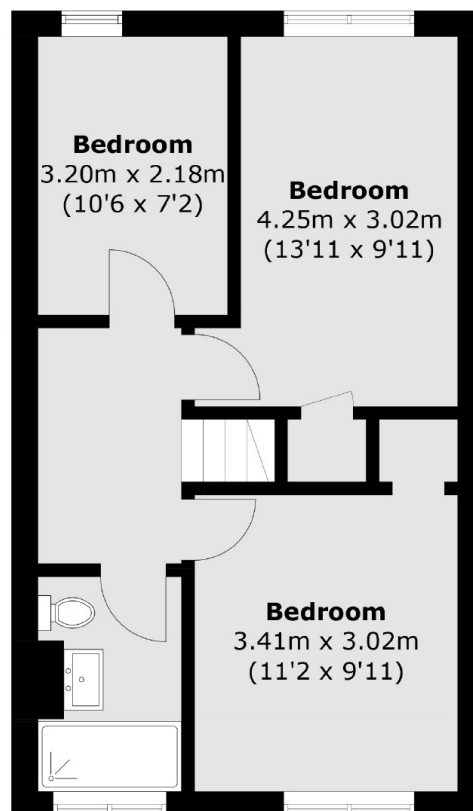
### Features

- Chain Free
- Split Level
- Garden
- Three Double Bedrooms
- Own Front Door

# Rupert Gardens, London, SW9



**Ground Floor**



**First Floor**

Total area (approx.): 75.5 sq. m (812.6 sq. ft)