



Kenwyn Road, SW4
£725,000

Dexters



Kenwyn Road, SW4

An immaculately presented two double bedroom ground floor garden flat on Kenwyn Road. The property has been extended and refurbished to a high standard with built-in smart lighting and smart thermostat, includes a large private garden, a share of the freehold and benefits from being sold chain free.

The apartment comprises of a principal bedroom at the front of the house with fitted wardrobes and feature fireplace. The second double bedroom has built-in storage/wardrobe, and space for a queen size bed, looking out onto the light well. The modern bathroom includes a window and big enough for a bath if needed. Hard-wood floors leading to the back of the property is the open plan kitchen / living / dining room, with well positioned skylights filling the room with natural light, under floor heating and modern kitchen appliances. This room offers access out to the private garden.

Kenwyn Road falls within the catchment of Clapham Manor Primary School (Ofstead outstanding) and offers superb access to the many local shops, restaurants and bars. Clapham North Underground Station (Northern Line) just a short stroll away.

Features

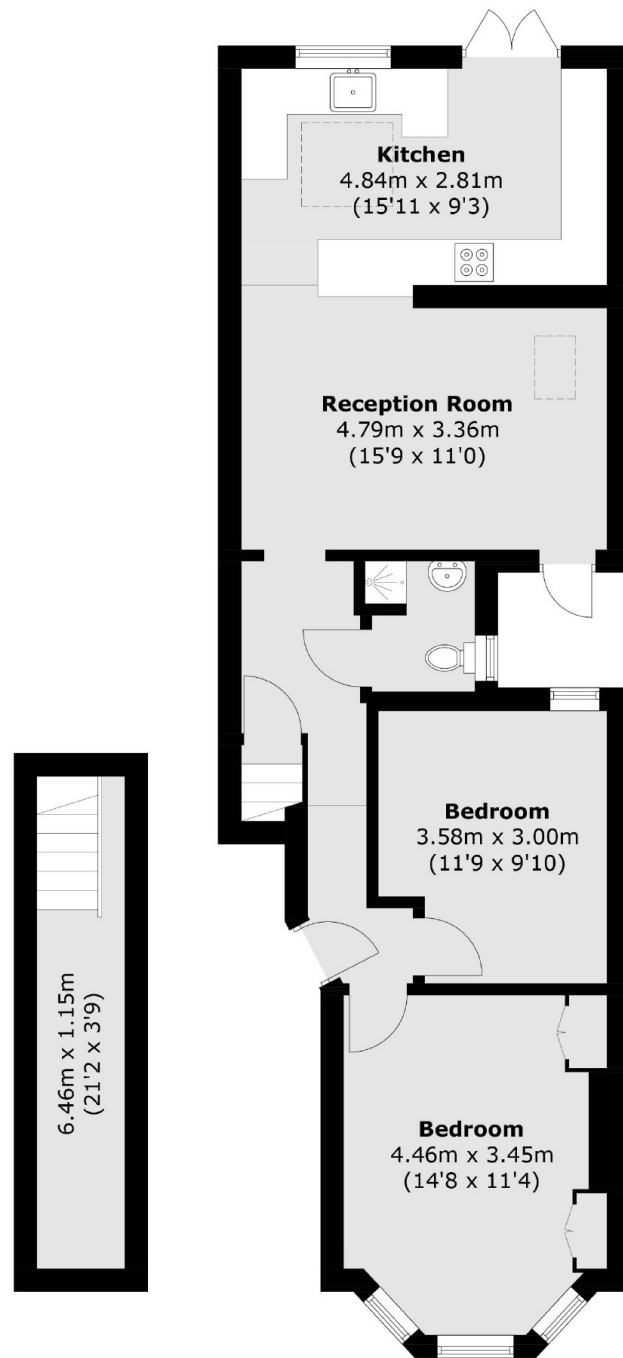
- Ground Floor
- Private Garden
- Two Double Bedrooms
- Share of Freehold
- Chain Free







Kenwyn Road, London, SW4



Basement

Ground Floor

Total area (approx.): 74.4 sq. m (800.8 sq. ft)
(Including Basement)

Dexters

Clapham High Street
55 Clapham High Street
London
SW4 7TG
Sales
020 7483 6363

Energy Rating: C. We aim to make our particulars both accurate and reliable. However they are not guaranteed; nor do they form part of an offer or contract. If you require clarification on any points then please contact us, especially if you're traveling some distance to view. Please note that appliances and heating systems have not been tested and therefore no warranties can be given as to their good working order.

 **RICS** | Regulated
Estate Agent
and Letting Agent

[dexters.co.uk](https://www.dexters.co.uk)