



## Clapham Road, SW9

£3,500 Per calendar month

A contemporary, fourth floor apartment located within a private development with a concierge, residents gym and large communal roof terrace. The immaculate and well-balanced accommodation extends to an impressive 846 sq.ft.

Clapham Place is situated moments from the many shops, restaurants and cafés of Clapham Old Town and Clapham High Street. Clapham North and Stockwell underground stations are a walk away.

### Features

- Open Plan Reception
- Two Double Bedrooms
- Secure Development
- Residents Gym
- Concierge
- Two Bathrooms



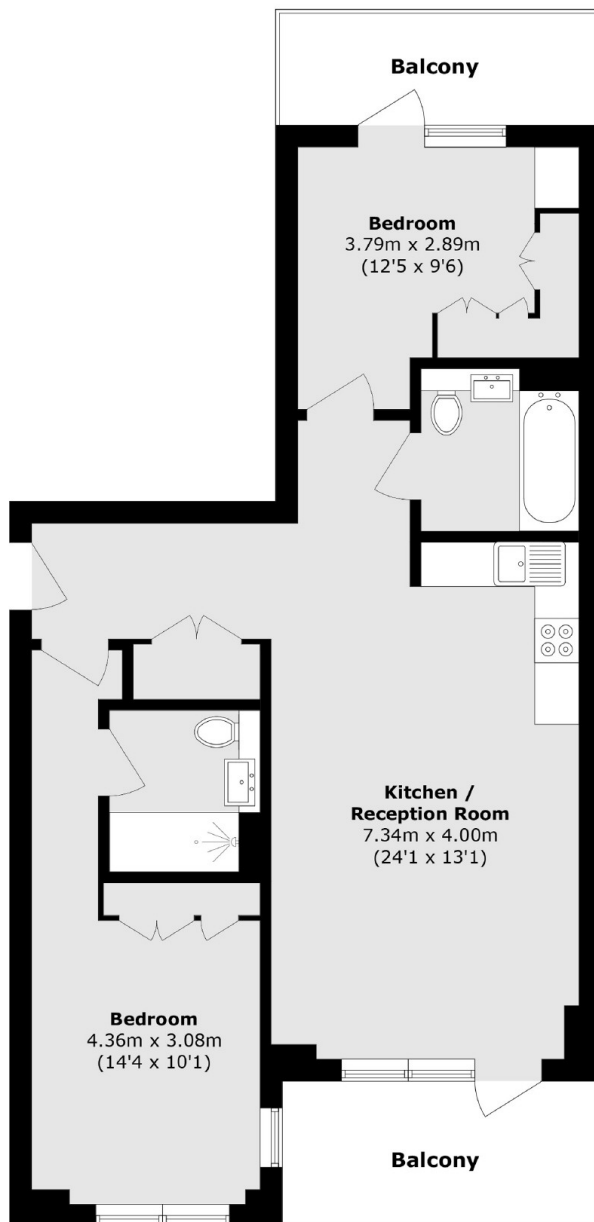
## Clapham Road, SW9

Comprising a spacious open plan kitchen reception room with an adjoining balcony, two double bedrooms - one of which has a private balcony, two bathrooms and ample storage.





# Clapham Road, London, SW9



Total area (approx.): 78.6 sq. m (846.1 sq. ft)

Balcony area (approx.): 12.0 sq. m (129.2 sq. ft)

## Dexters

Clapham High Street  
55 Clapham High Street  
London  
SW4 7TG

Lettings  
020 7483 6364

Energy Rating: . We aim to make our particulars both accurate and reliable. However they are not guaranteed; nor do they form part of an offer or contract. If you require clarification on any points then please contact us, especially if you're traveling some distance to view. Please note that appliances and heating systems have not been tested and therefore no warranties can be given as to their good working order.

 **RICS** | Regulated  
Estate Agent  
and Letting Agent

dexters.co.uk