



**Hemberton Road, SW9**

**£1,625,000**

**Dexters**





## Hemberton Road, SW9

This fully refurbished six-bedroom, three-bathroom house spans a natural three-storey layout and offers generous, stylish living throughout. Finished to a high standard, the property features spacious interiors, modern fixtures, and thoughtful design touches. Highlights include a large south-facing garden, perfect for entertaining or relaxing, and a private roof terrace offering an additional outdoor retreat. With six well-proportioned bedrooms and three sleek bathrooms, this is an ideal home for families or sharers alike.

Hemberton Road is a quiet, residential street perfectly situated for convenient access to the vibrant amenities of both Clapham and Brixton. Residents are just moments from an array of popular restaurants, independent shops, and lively bars. Clapham North station is within easy reach, while Stockwell and Brixton stations are also just a short stroll away, offering excellent transport links. The area is also well-served by several highly regarded schools, making it ideal for families and professionals alike.

### Features

- Six Bedroom
- Three Bathroom
- Fully Refurbished
- Roof Terrace
- South Facing Garden
- Original period features





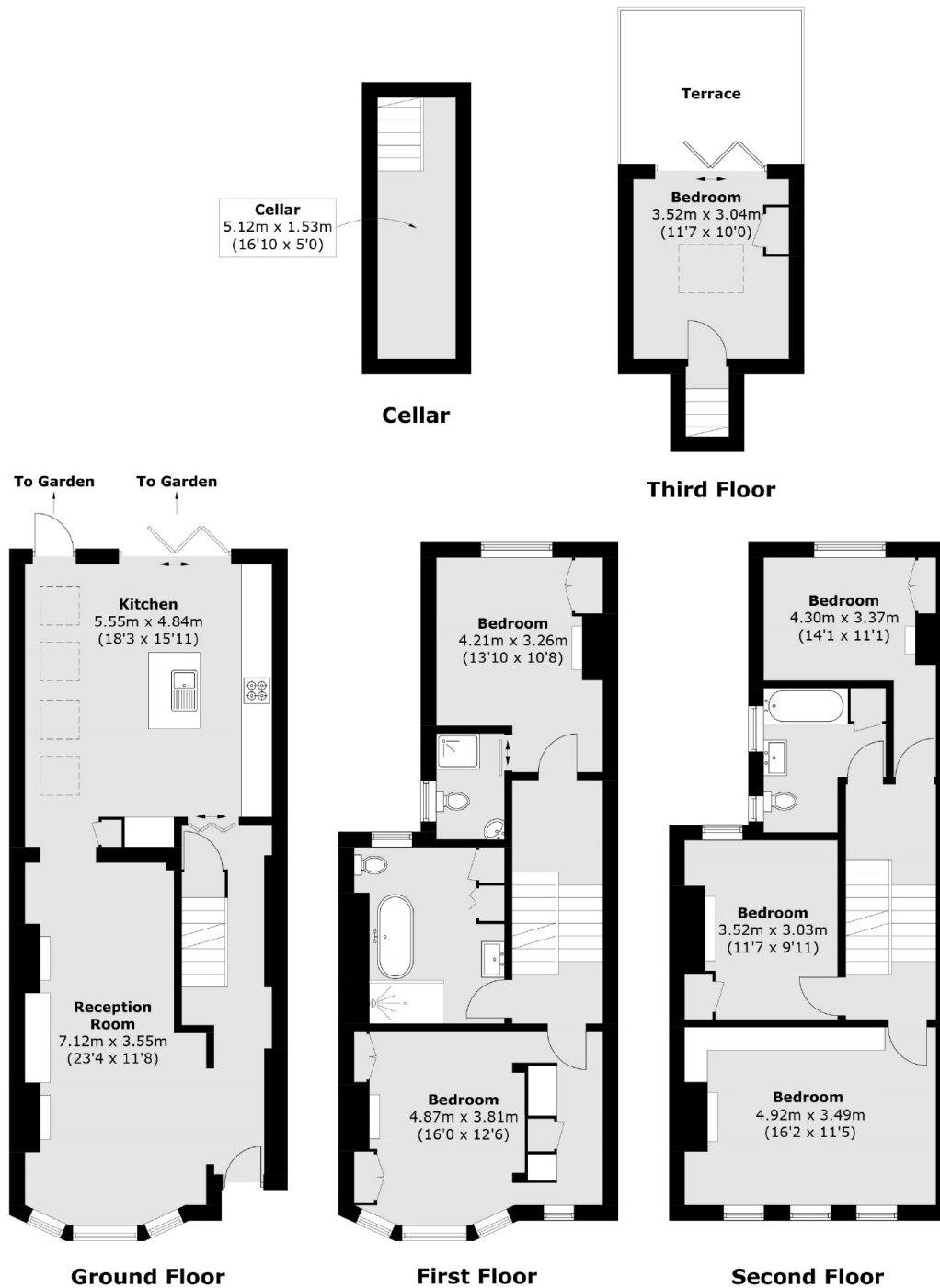








# Hemberton Road, London, SW9



Total area (approx.): 189.1 sq. m (2,035.4 sq. ft)  
(Including Cellar)  
Terrace: 10.6 sq. m (114.1 sq. ft)

## Dexters

Clapham High Street  
55 Clapham High Street  
London  
SW4 7TG  
Sales  
020 7483 6363

Energy Rating: C. We aim to make our particulars both accurate and reliable. However they are not guaranteed; nor do they form part of an offer or contract. If you require clarification on any points then please contact us, especially if you're traveling some distance to view. Please note that appliances and heating systems have not been tested and therefore no warranties can be given as to their good working order.

**RICS** Regulated  
Estate Agent  
and Letting Agent

dexters.co.uk