



Nightingale Lane, SW12
£750,000

Dexters



Nightingale Lane, SW12

A well presented two double bedroom ground floor apartment set within the iconic Hightrees House building by Clapham Common & also moments from Clapham South tube station. The property further benefits from a concierge, residents swimming pool/gym, oversized communal roof terrace, private courtyard and allocated off street parking.

The property comprises of a large entrance hallway with added storage, a newly fitted bathroom, two double bedrooms and large open plan living / kitchen / dining room.

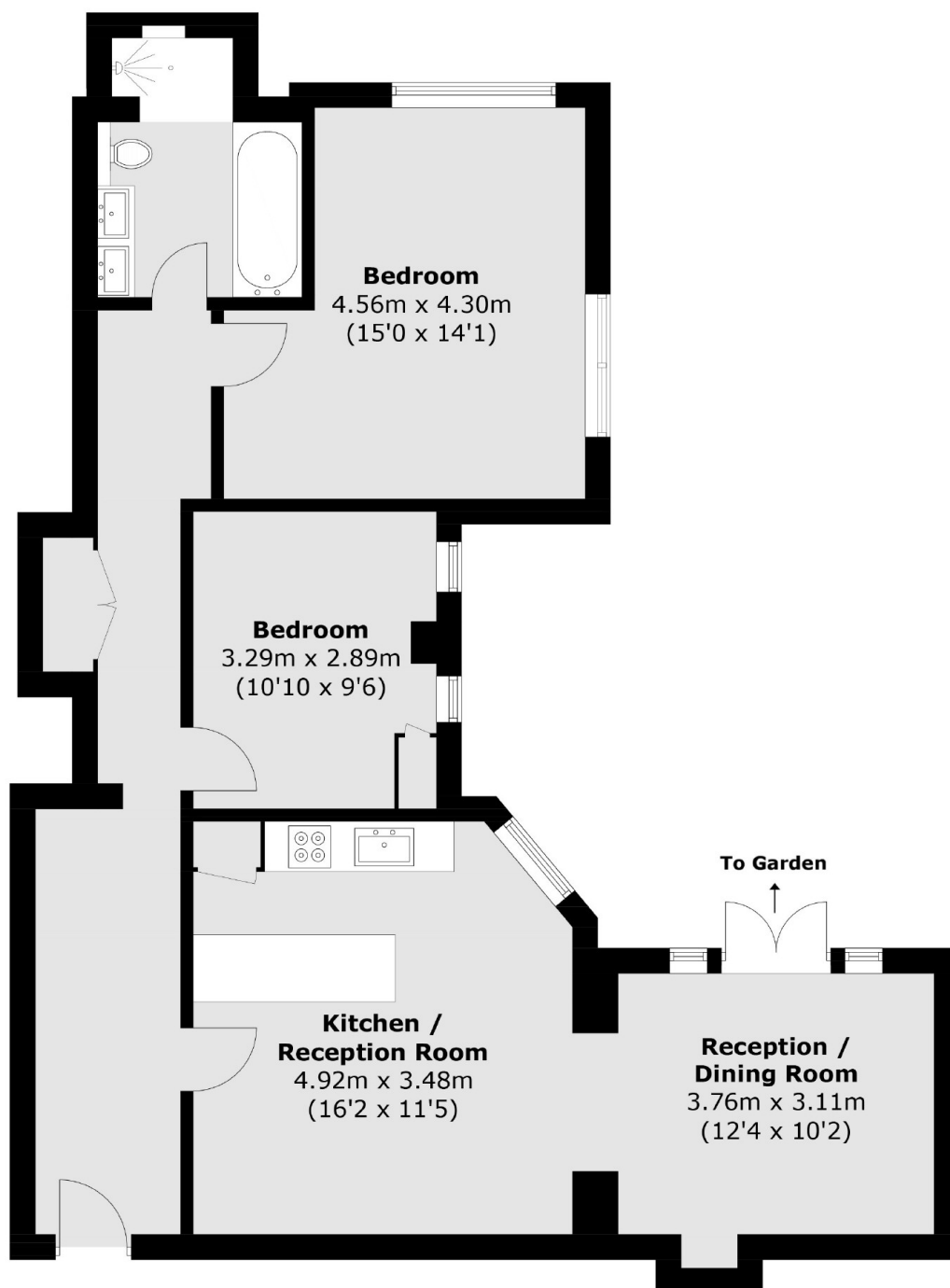
This wonderful art deco building is located on Nightingale Lane between both Clapham and Wandsworth Commons, so enviably located for easy access to everything that the area has to offer from restaurants, bars, green open spaces and excellent transport links.

Features

- Two Double Bedrooms
- Private Courtyard
- Allocated Parking
- Concierge
- Gym
- Swimming pool



Nightingale Lane, London, SW12



Total area (approx.): 89.5 sq. m (963.4 sq. ft)

Dexters

Clapham High Street
55 Clapham High Street
London
SW4 7TG
Sales
020 7483 6363

Energy Rating: C. We aim to make our particulars both accurate and reliable. However they are not guaranteed; nor do they form part of an offer or contract. If you require clarification on any points then please contact us, especially if you're traveling some distance to view. Please note that appliances and heating systems have not been tested and therefore no warranties can be given as to their good working order.

 **RICS** | Regulated
Estate Agent
and Letting Agent

dexters.co.uk