



Priory Grove, SW8

£2,450 Per calendar month

An attractive and unique warehouse style flat, set in a gated Victorian school conversion in the Stockwell conservation area, with private off-street parking in. Offering one double bedroom, a spacious open plan reception room, separate kitchen and a stylish bathroom.

Located less than half a miles walk from Stockwell tube, with both the Victoria and Northern lines and just short walk to Nine Elms station - providing excellent transport links into the city. You'll also find local amenities and Larkhall Park nearby.

Features

- One Double Bedroom
- Mezzanine Level
- Converted School
- Gated Develop ment
- Stylish Finish
- Off-Street Parking



Priory Grove, SW8

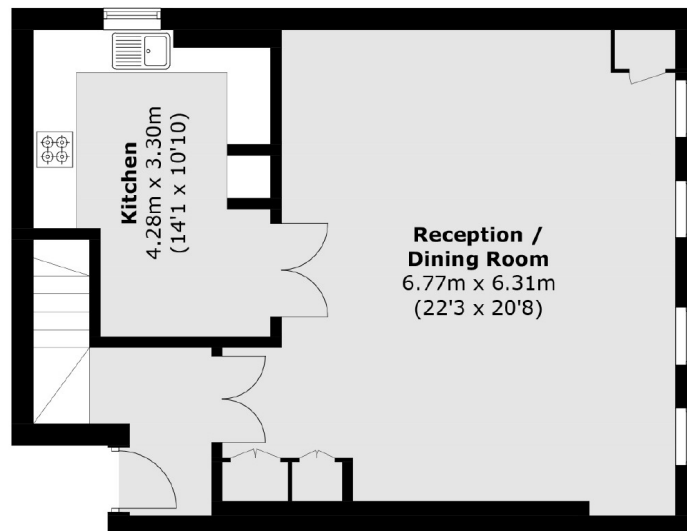
Set within a converted Victorian school conversion, this property comes with a generous open plan reception room with double height ceilings and large warehouse style windows. This space also offers a large kitchen and mezzanine level with a double bedroom and en suite bathroom with Italian tiling, underfloor heating and a stand alone bathtub. The flat also comes with off-street parking.



Priory Grove, London, SW8



Mezzanine



First Floor

Total area (approx.): 95.8 sq. m (1,031.2 sq. ft)
(Including Mezzanine / Excluding Void)