



## Hazelbourne Road, SW12

£4,500 Per calendar month

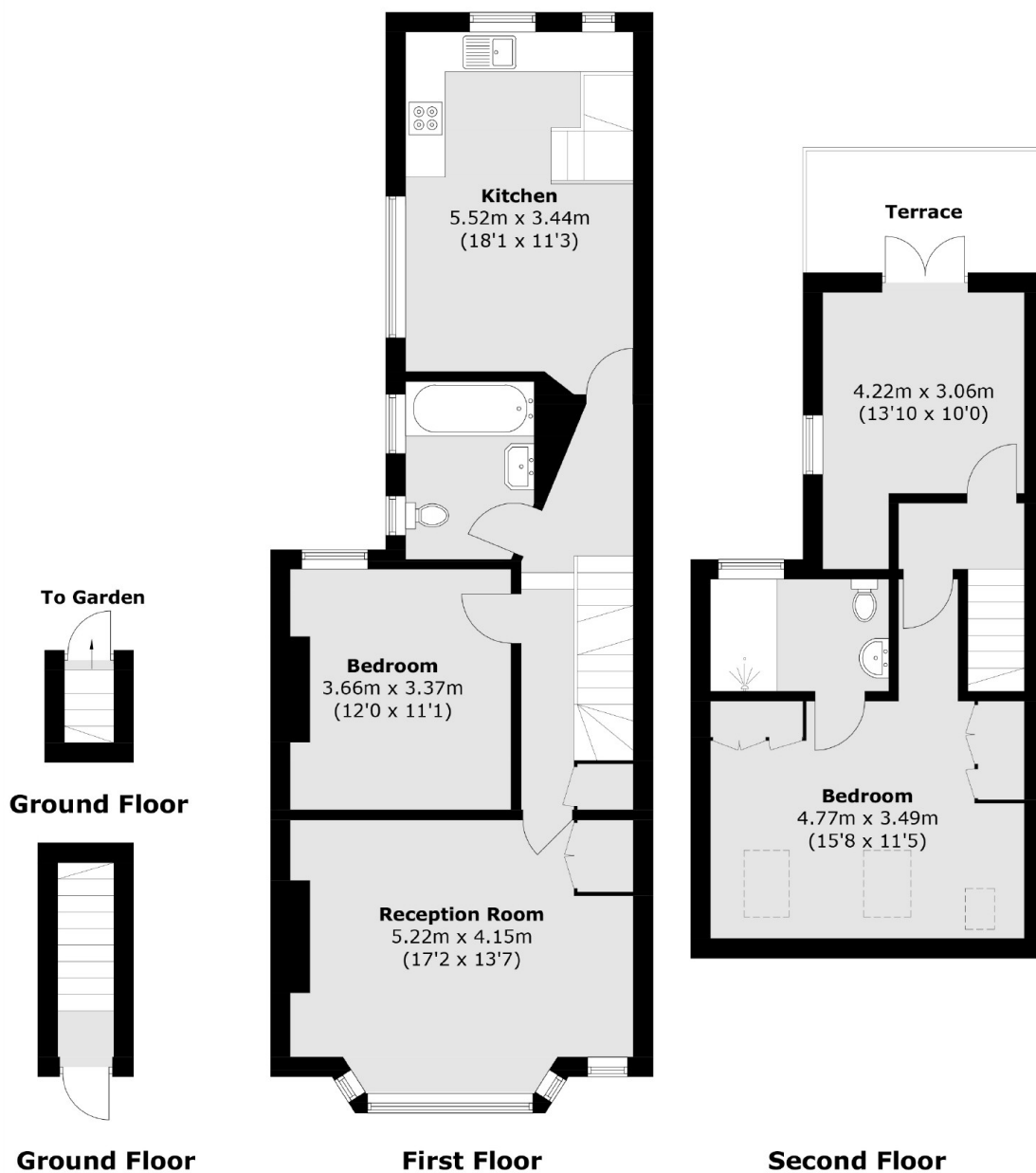
Immaculately presented, this first floor flat comes with three bedrooms, a large reception room, a modern eat-in kitchen and a private garden.

Hazelbourne Road is ideally situated for Clapham South station and the many local shops, restaurants and bars of Balham Hill, the Nightingale Triangle and Abbeville Village.

### Features

- Period Conversion
- Split-Level
- Three Bedrooms
- Two Bathrooms
- Private Garden
- Roof Terrace

# Hazelbourne Road, London, SW12



Total area (approx.): 111.0 sq. m (1,194.7 sq. ft)  
Terrace area : 6.6 sq. m (71.0 sq. ft)