



## Templar Street, SE5

£646 Per week

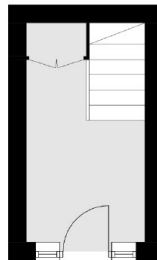
Located on the tranquil Templar Street, this beautifully presented 1,500 sq ft split-level maisonette offers the perfect blend of space, style, and location. Boasting its own private entrance, this three-bedroom home is filled with natural light and has been maintained to a high standard throughout. Not suitable for three sharers. Families or two sharers maximum.

Set just moments from the beautifully kept Myatt's Fields Park with its tennis courts, café, and landscaped gardens the location offers a peaceful retreat while remaining well connected to central London.

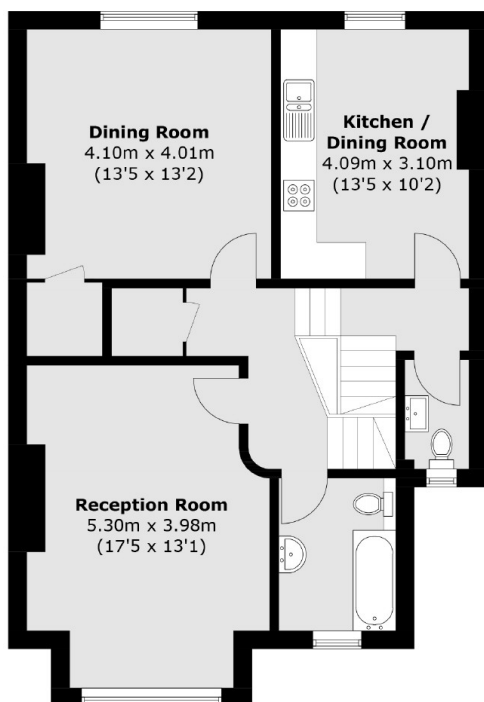
### Features

- Three Bedrooms
- Two Bathrooms
- High Ceilings
- Modern Kitchen
- Dining Room
- Victorian Maisonette

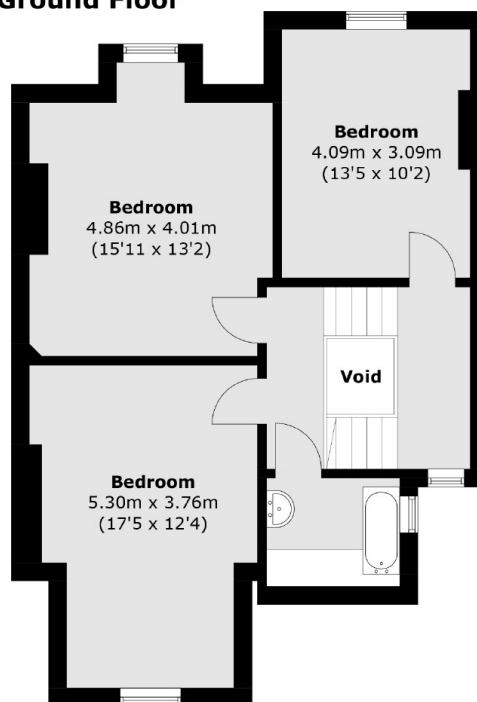
# Templar Street, London, SE5



**Ground Floor**



**First Floor**



**Second Floor**

Total area (approx.): 140.3 sq. m (1,510.1 sq. ft)  
(Excluding Void)