



## Brook Green, W14

£1,100,000

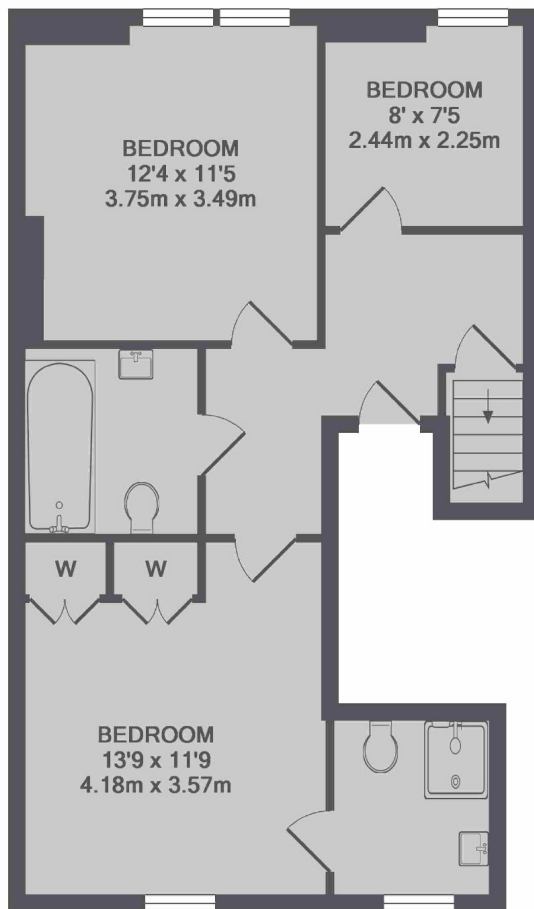
A beautifully refurbished three double bedroom top floor (south facing) apartment that has an abundance of entertaining space in this grand Victorian building.

Bolingbroke Road is conveniently located for the Hammersmith and Shepherds Bush underground stations and Kensington Olympia (Overground).

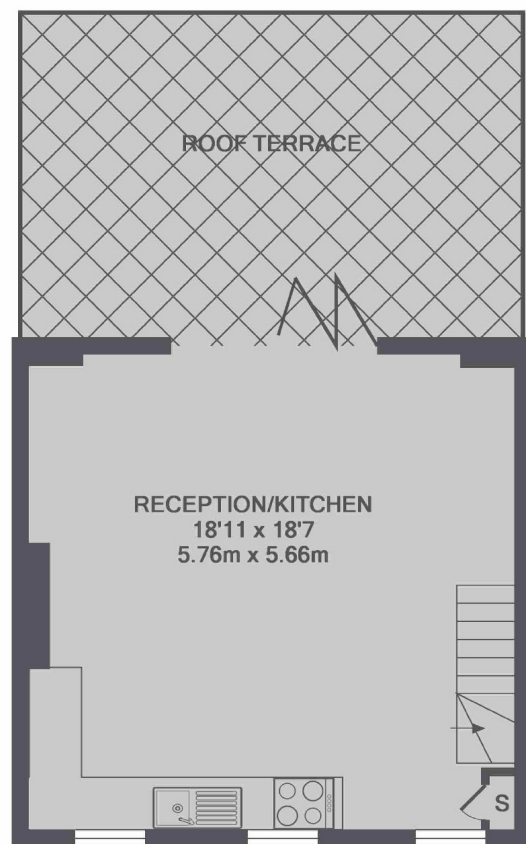
### Features

South Facing Terrace  
Three Bedrooms  
Share Of Freehold  
Entertaining Space  
High Street Kensington  
Views Over Brook Green  
Village

## Bolingbroke Road, London, W14



2ND FLOOR



3RD FLOOR

TOTAL APPROX. FLOOR AREA 914 SQ.FT. (84.9 SQ.M.)

### Contact

To arrange a viewing call our office on the number below or visit our website.



Energy Rating: D. We aim to make our particulars both accurate and reliable. However they are not guaranteed; nor do they form part of an offer or contract. If you require clarification on any points then please contact us, especially if you're traveling some distance to view. Please note that appliances and heating systems have not been tested and therefore no warranties can be given as to their good working order.