



Sterne Street, W12

£1,154 Per week

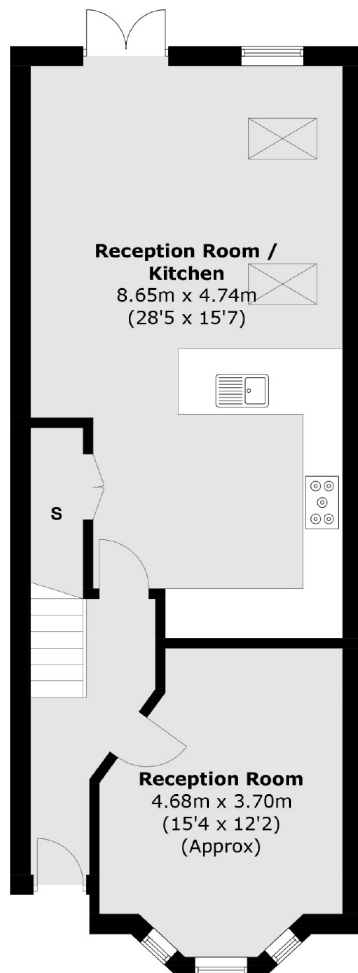
This contemporary style, newly renovated, Victorian house has been redesigned from the ground up. The property offers a show home finish with all the bells and whistles.

Sterne Street is perfectly located in the heart of Shepherd's Bush. It offers easy access to both Shepherd's Bush Central line and Overground stations, as well as Westfield Shopping Centre.

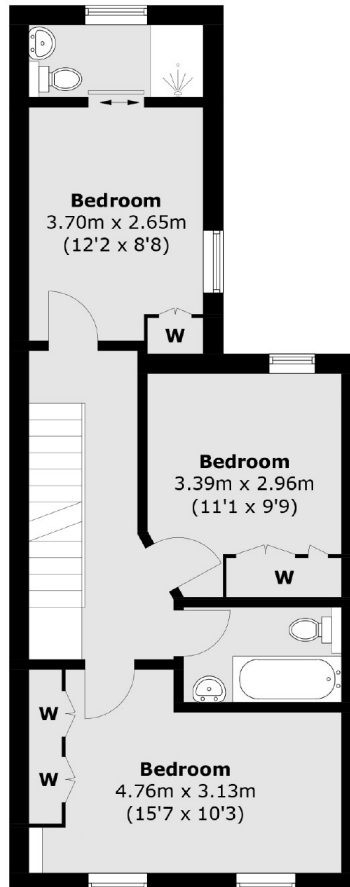
Features

- Central Location
- Four Bedrooms
- Show Home Finish
- Private Garden
- Roof Terrace
- Newly Renovated

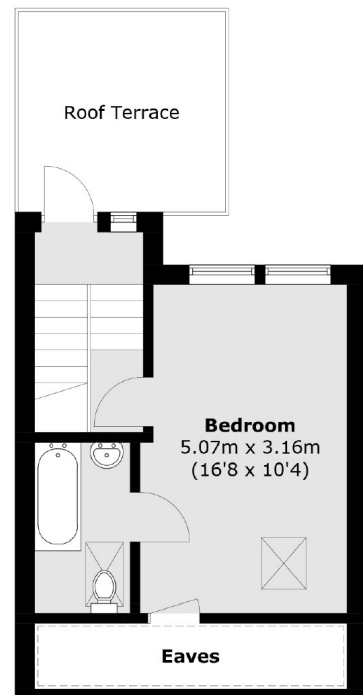
Sterne Street, London, W12



Ground Floor



First Floor



Second Floor

Total area (approx.): 137.4 sq. m (1,478.0 sq. ft)
Roof Terrace: 9.6 sq. m (103.3 sq. ft)
(Excluding Eaves)

Contact

To arrange a viewing call our office on the number below or visit our website.



Energy Rating: E. We aim to make our particulars both accurate and reliable. However they are not guaranteed; nor do they form part of an offer or contract. If you require clarification on any points then please contact us, especially if you're traveling some distance to view. Please note that appliances and heating systems have not been tested and therefore no warranties can be given as to their good working order.