



**Jeddo Road, W12**

**£1,250,000**

**Dexters**



## Jeddo Road, W12

A modern freehold house set on a quiet residential road close to Wendell Park. This property is well proportioned and set over three floors with four bedrooms, two bathrooms and a south facing garden.

Upon entering, the house has a large reception room with bay window, downstairs WC and utility. The kitchen is modern and leads on to a wonderful south facing garden.

On the second floor you will find the principal bedroom and bathroom, along with a further two double bedrooms; all are bright and spacious.

The third floor has the final bedroom with ample storage. A large, quirky bathroom is situated next door leading onto a private south facing terrace.

Jeddo Road is a tree lined, residential road in Askew Village. It is located close to the local primary schools and minutes away from the green space of Wendell Park.

### Features

- Four Bedrooms
- Two Bathrooms & W.C.
- South Facing Garden
- Private Terrace
- Contemporary Design
- Wendell Park



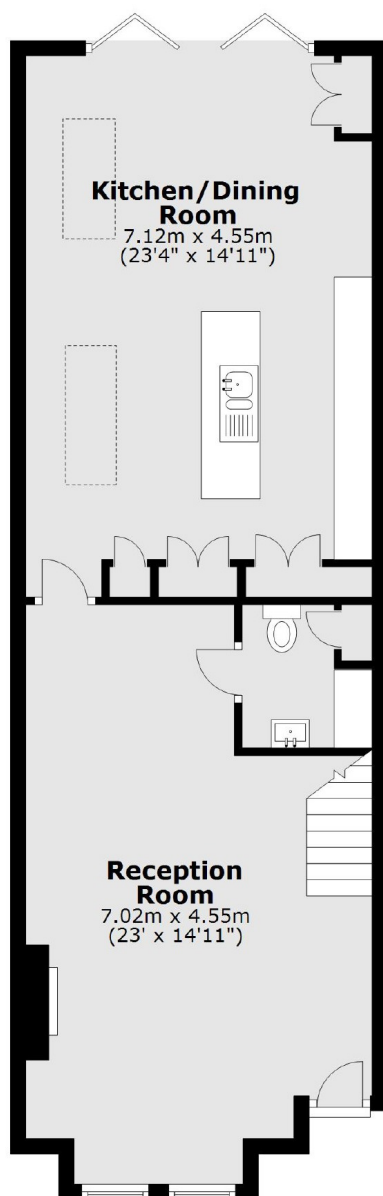




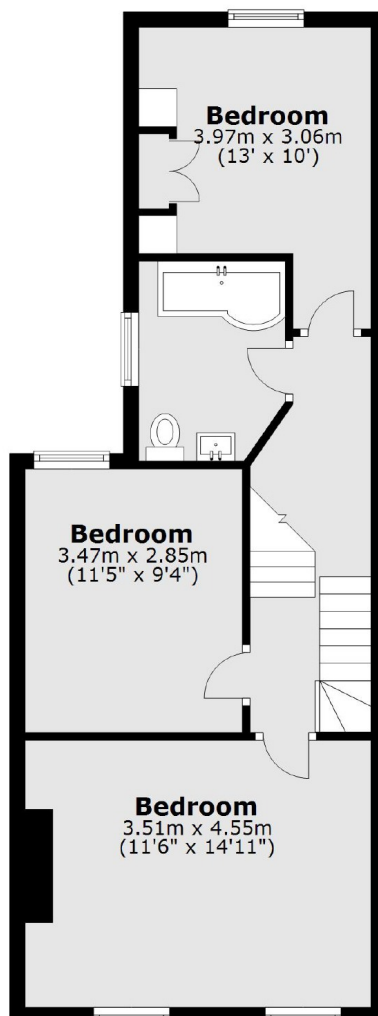




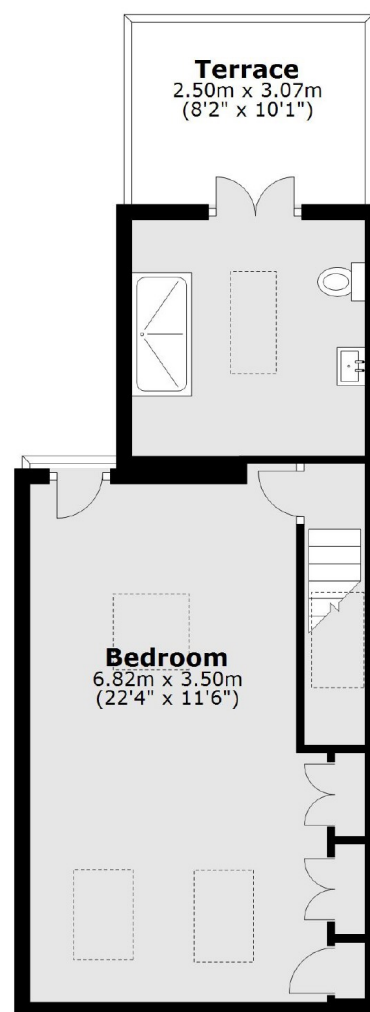
# Jeddo Road, London, W12



**Ground Floor**



**First Floor**



**Second Floor**

Total area: approx. 156.1 sq. metres (1680.6 sq. feet)