



## Wood Crescent, W12

### £3,500,000

A well-presented and spacious three bedroom penthouse apartment in the popular Television Centre.

The Television Centre is the former home of the BBC building and found on the developments doorstep is a choice of three tube lines taking you into Central London as well as a staggering choice of shops at Westfield Shopping Centre. The building neighbours Soho House with its many restaurants and luxurious amenities for its members.

### Features

- Three Bedrooms
- Three Bathrooms
- 24 Hour Concierge
- Swimming Pool/Gym
- Two Private Terraces
- Luxury Development

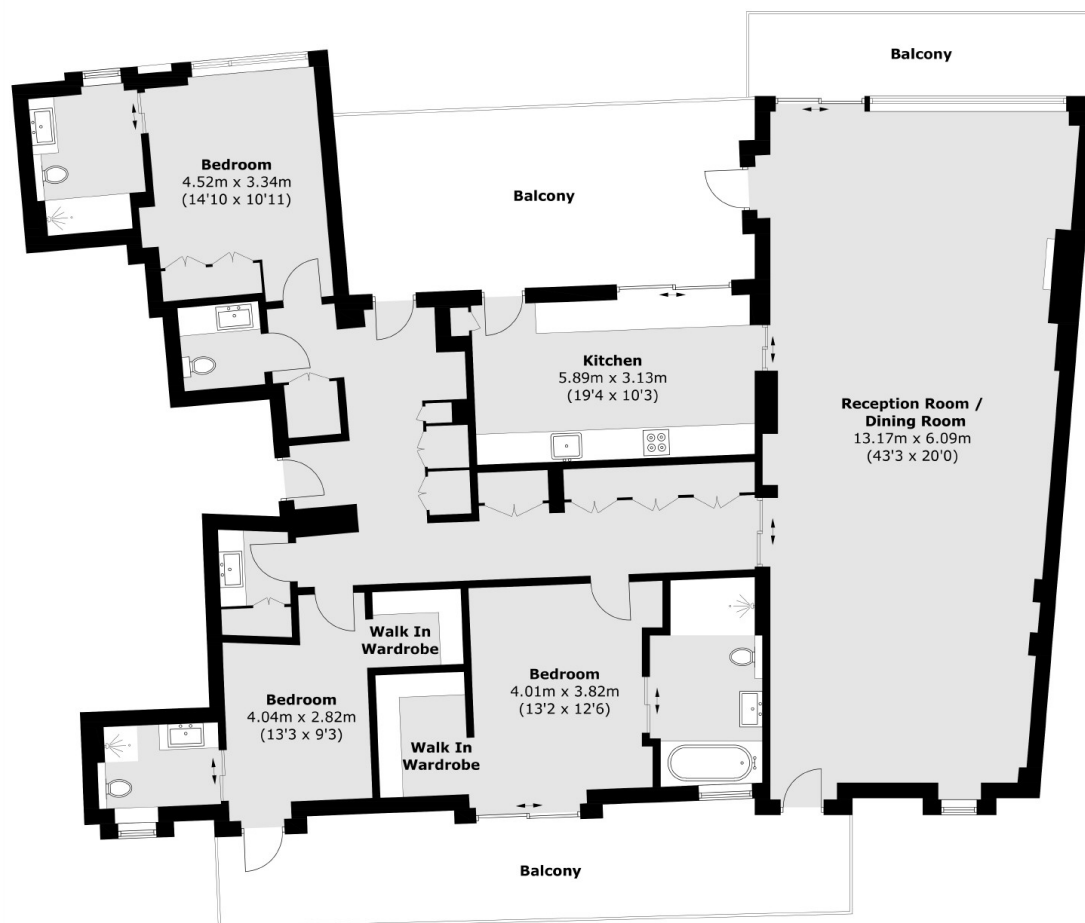


## Wood Crescent, W12

This home spanning over two thousand square feet offers a generous reception for living and dining, three double bedrooms with three bathrooms, plenty of storage and two large terraces giving lovely views of the city. This beautiful apartment would make a wonderful home for a young family or professional couple.



# Wood Crescent, London, W12



Total area (approx.): 203.1 sq. m (2,186.1 sq. ft)  
Balcony: 64.0 sq. m (688.9 sq. ft)

## Dexters

Shepherds Bush and Brook Green  
53 Shepherds Bush Green  
London  
W12 8PS  
Sales  
020 8740 2900

Energy Rating: B. We aim to make our particulars both accurate and reliable. However they are not guaranteed; nor do they form part of an offer or contract. If you require clarification on any points then please contact us, especially if you're traveling some distance to view. Please note that appliances and heating systems have not been tested and therefore no warranties can be given as to their good working order.

 **RICS** | Regulated  
Estate Agent  
and Letting Agent

[dexters.co.uk](https://www.dexters.co.uk)