



Milson Road, W14

£738 Per week

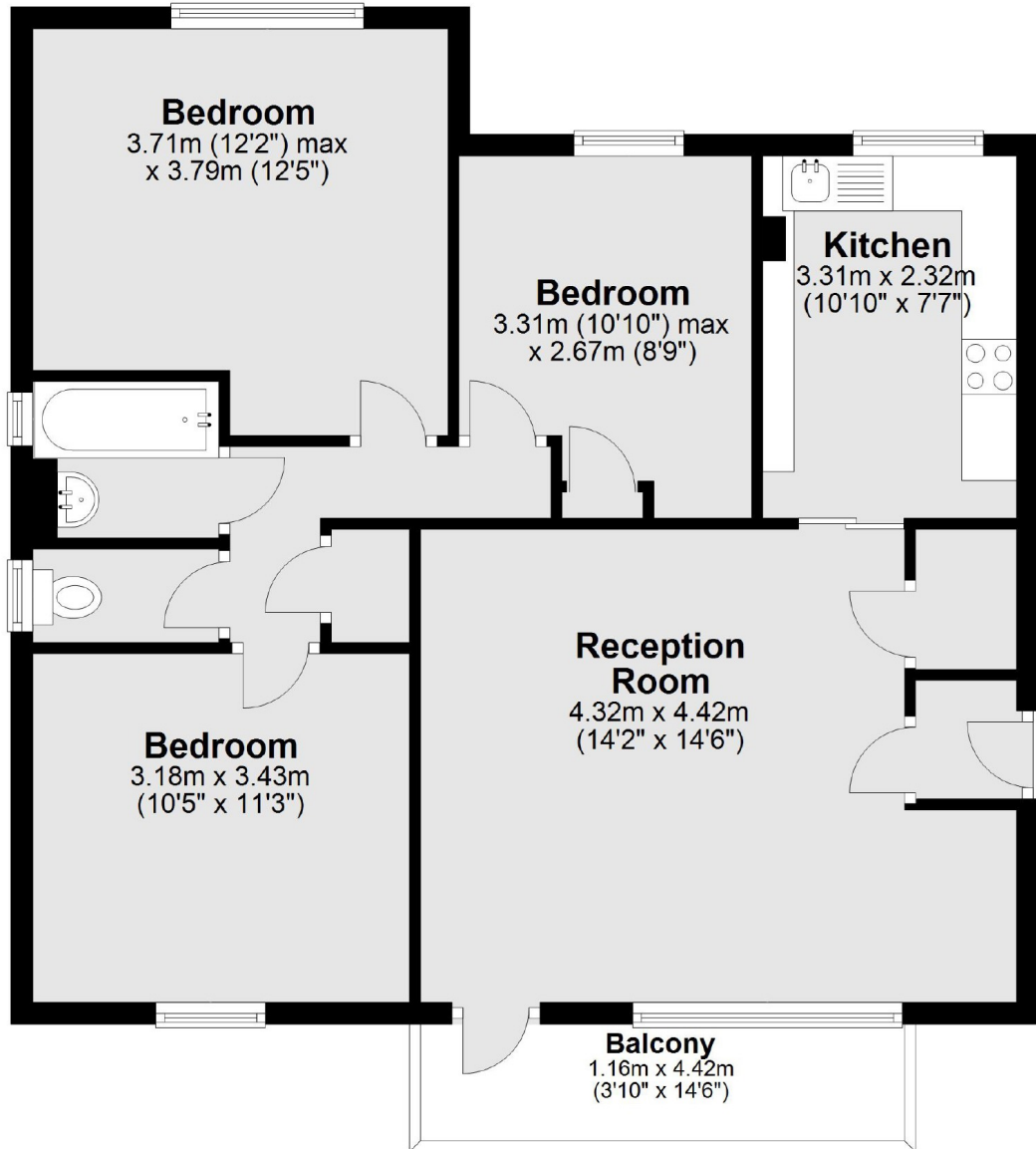
A large and bright three bedroom flat with modern kitchen and private balcony. The apartment allows for ample natural light and offers three double bedrooms and is finished to a modern standard throughout. This is families only.

Located in the heart of Brook Green, Milson Road offers easy access to a local amenities. Shepherds Bush Station and Westfield are 0.5 miles away.

Features

Brook Green
Three Bedrooms
Large Reception
Modern Kitchen
Wood Floors
Ample Storage

Milson Road, London, W14



Total area: approx. 73.7 sq. metres (793.0 sq. feet)