



Graham Road, SW19

£950,000

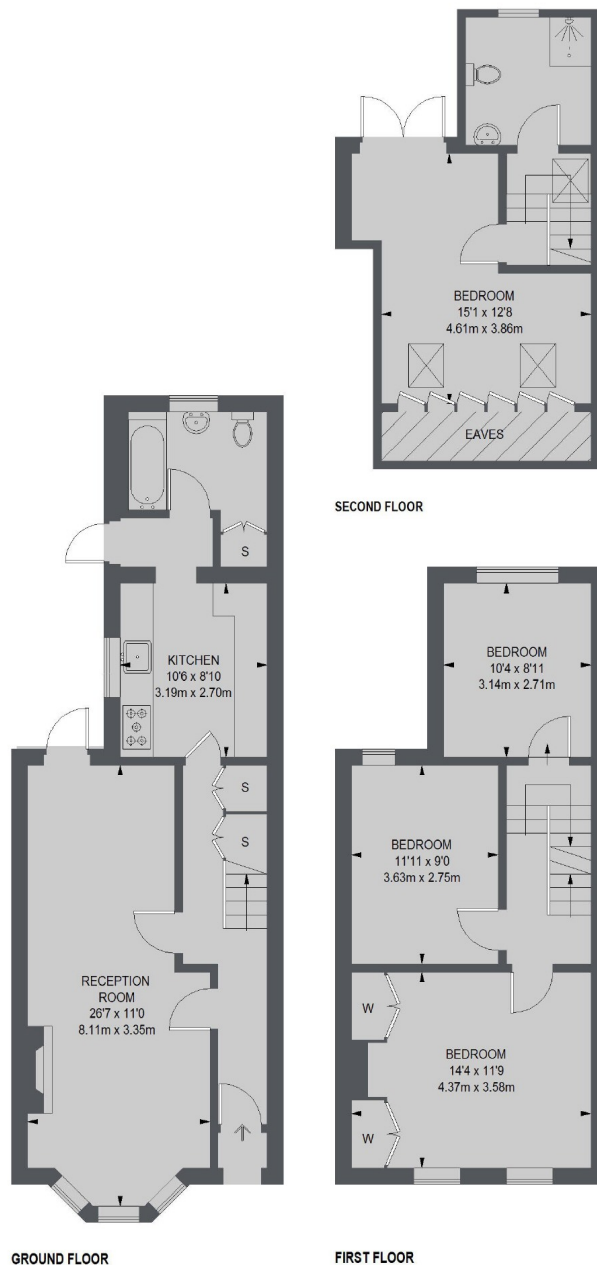
A four double bedroom Victorian house spread over three floors. The reception room is open plan, there is a south west facing garden and is located close to Dundonald Primary School, making it an ideal family home.

Graham Road is a popular residential street located within Wimbledon Town Centre. You are just moments from Wimbledon Tube and Overground Station, and an eclectic range of restaurants bars and shopping facilities.

Features

- Four Double Bedrooms
- Two Bathrooms
- Victorian
- S/West Facing Garden
- Potential To Side Extend
- Dundonald Catchment

Graham Road, London, SW19



TOTAL APPROX. FLOOR AREA (EXCLUDING EAVES)
1269 SQ. FT. (117.85 SQ. M.)

Contact

To arrange a viewing call our office on the number below or visit our website.



Energy Rating: . We aim to make our particulars both accurate and reliable. However they are not guaranteed; nor do they form part of an offer or contract. If you require clarification on any points then please contact us, especially if you're traveling some distance to view. Please note that appliances and heating systems have not been tested and therefore no warranties can be given as to their good working order.