



Marryat Place, SW19

£10,000 Per calendar month

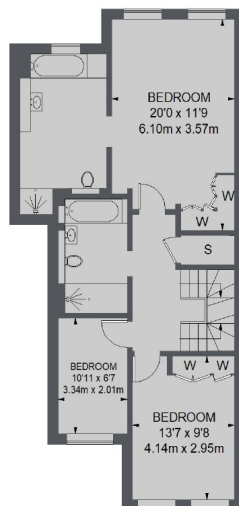
An exquisite, five bedroom semi detached home built by the world renowned, Berkeley Homes. Located in a highly desirable, exclusive cul de sac in Wimbledon Village.

Marryat Place is a highly desirable location just off Marryat Road, with breath-taking views over the very best points of the London skyline. On the doorstep of The Wimbledon Tennis Club, Golf courses and private schools.

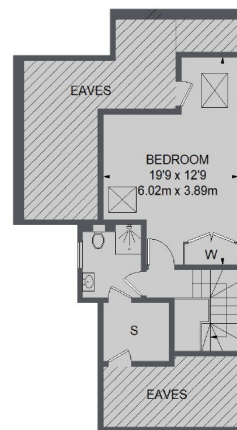
Features

- Five Bedroom House
- Four Bathroom
- Off Street Parking
- Brand New House
- Wimbledon Village
- Wimbledon Tennis

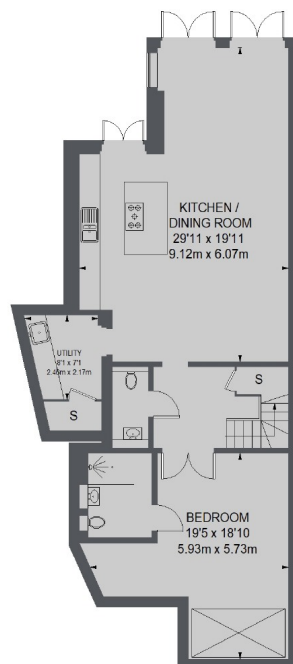
Marryat Place, London, SW19



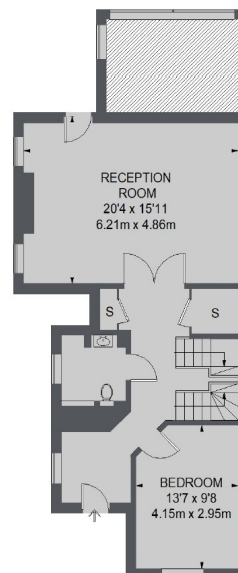
FIRST FLOOR



SECOND FLOOR



LOWER GROUND FLOOR



GROUND FLOOR

TOTAL APPROX. FLOOR AREA
(EXCLUDING EAVES STORAGE)
2859 SQ. FT. (265.65 SQ. M.)

Contact

To arrange a viewing call our office on the number below or visit our website.



Energy Rating: B. We aim to make our particulars both accurate and reliable. However they are not guaranteed; nor do they form part of an offer or contract. If you require clarification on any points then please contact us, especially if you're traveling some distance to view. Please note that appliances and heating systems have not been tested and therefore no warranties can be given as to their good working order.