



## Cliveden Road, SW19

£499,950

A two double bedroom first floor purpose built maisonette. The property is located on a quiet street, lined with Edwardian family homes. There is a private south west facing rear garden stretching over sixty feet and no chain.

Located on a tree-lined road, perfectly situated for both Dundonald and Wimbledon Chase Primary. There are fast links from Wimbledon district and overground services to Waterloo and Wimbledon Chase to Kings Cross.

### Features

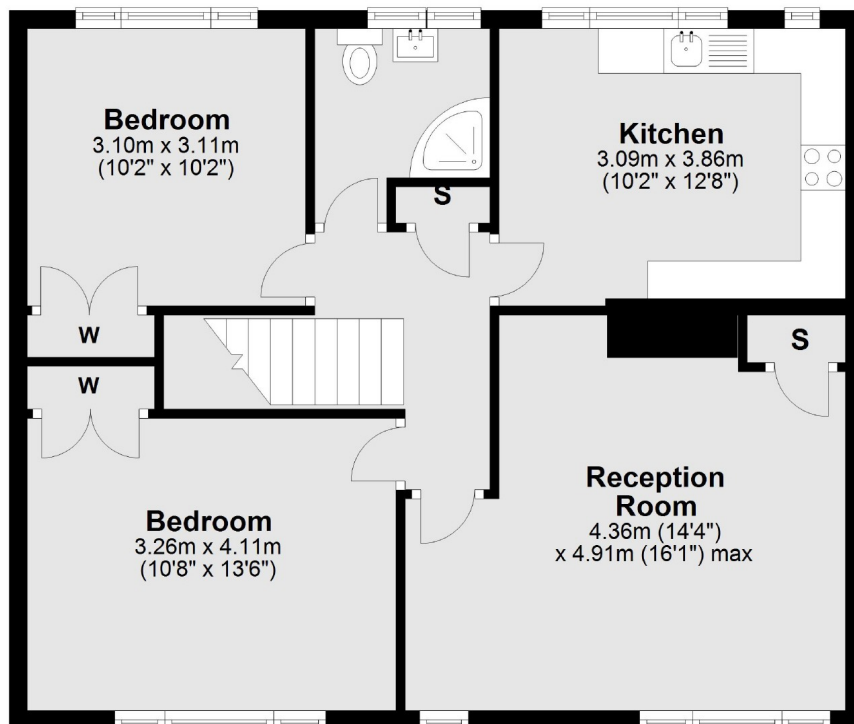
- Two Double Bedrooms
- No Onward Chain
- South West Facing Garden
- Quiet Desirable Street
- Own Front Door
- Extended Lease

## Cliveden Road, London, SW19

### Ground Floor



### First Floor



Total area: approx. 71.7 sq. metres (771.3 sq. feet)

### Contact

To arrange a viewing call our office on the number below or visit our website.



Energy Rating: D. We aim to make our particulars both accurate and reliable. However they are not guaranteed; nor do they form part of an offer or contract. If you require clarification on any points then please contact us, especially if you're traveling some distance to view. Please note that appliances and heating systems have not been tested and therefore no warranties can be given as to their good working order.