



Atkinson Close, SW20

£12,500 Per calendar month

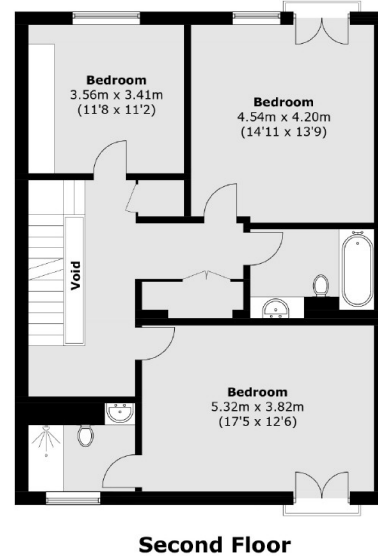
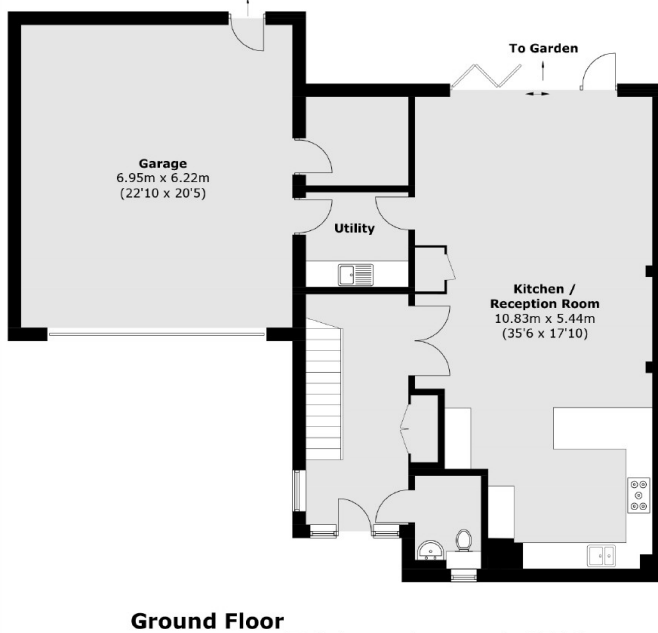
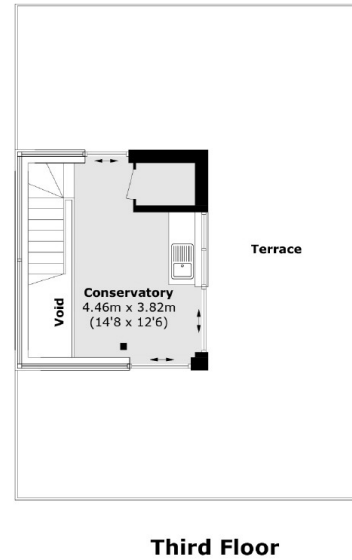
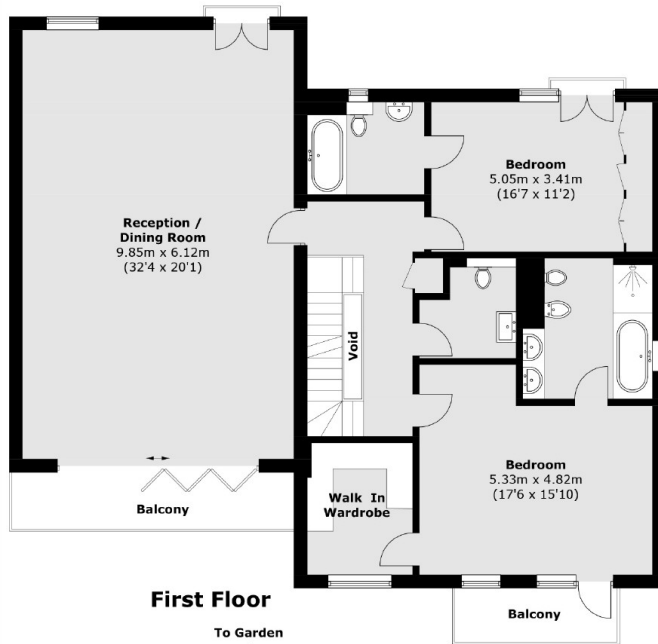
A former Berley show home detached five bedroom, four bathroom family home, offering exceptional quality in both furnishings and appliances. The property offers sophisticated, luxury living, with 280 degree roof terrace and a two car garage.

Wimbledon Common and Wimbledon Village are within walking distance, offering an array of chic shops, boutiques, historic pubs, restaurants and green open spaces. The area also boasts some highly regarded and sought after local and independent schools.

Features

- Five Bedrooms
- Four Bathroom
- Two Car Garage
- Roof Terrace
- Underfloor Heating
- Gated Development

Atkinson Close, London, SW20



Total area (approx.): 377.6 sq. m (4064.4 sq. ft)
Balcony / Terrace area: 79.5 sq. m (855.7 sq. ft)
(Excluding Voids)