



## Blenheim Road, SW20

### £400,000

A one-bedroom apartment with a share of the freehold featuring a large semi-open plan kitchen/dining/living room. There are Juliet balconies from both the lounge and a large bedroom. There is plenty of storage, and a share of the freehold all within a beautiful Edwardian conversion, as well as use of a communal garden.

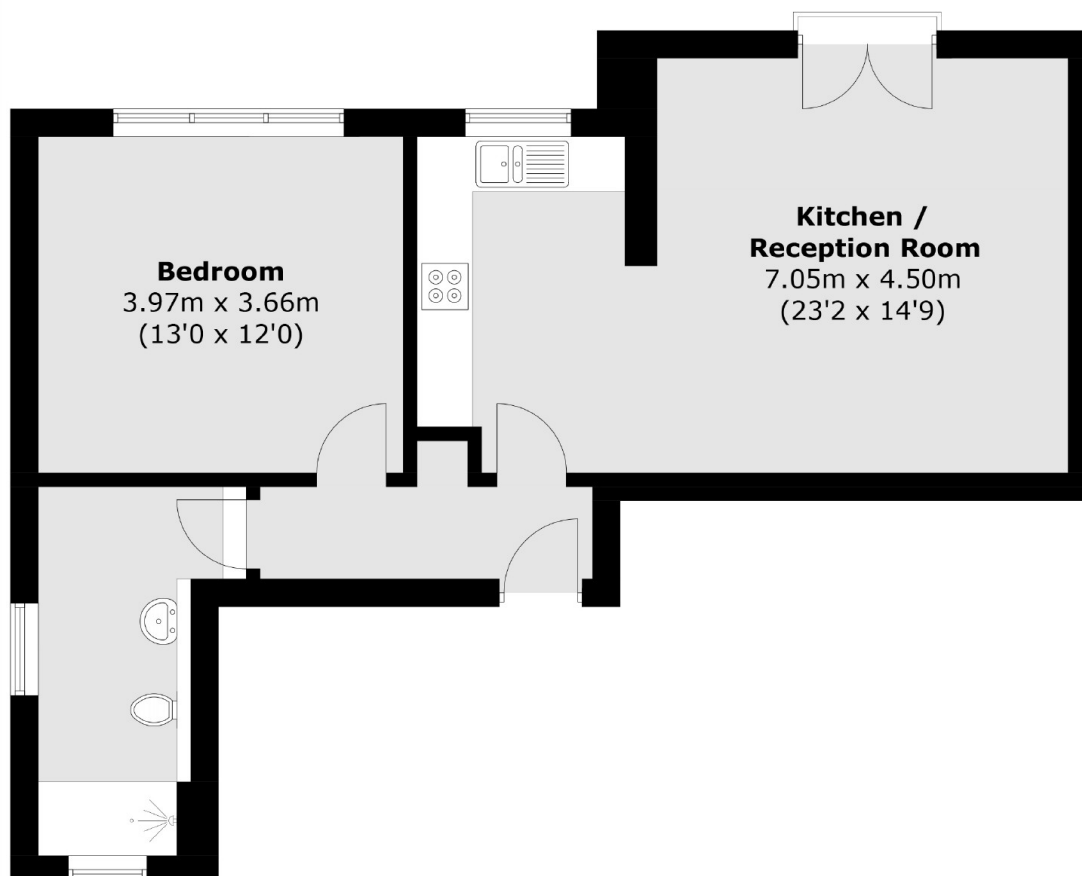
This small exclusive development includes just six flats and two brand new 3/4 bedroom freehold houses with fantastic specifications located on a quiet road with just nine houses on the street.

Blenheim Close is a quiet cul-de-sac road tucked away just off of Grand Drive SW20. It is nearby to Raynes Park Station which has a great service into Wimbledon, Clapham and Waterloo. The A3 is also just around the corner offering similar routes but by car.

### Features

- Communal Garden
- Share Of The Freehold
- High End Specification
- Share Of The Freehold
- Quiet Cul-De-Sac
- Allocated Parking Available For Some Apartments

# Blenheim Road, Raynes Park, SW20



## First Floor

Total area (approx.): 56.7 sq. m (610.3 sq. ft)