

## Islington, N1

£595 Per week

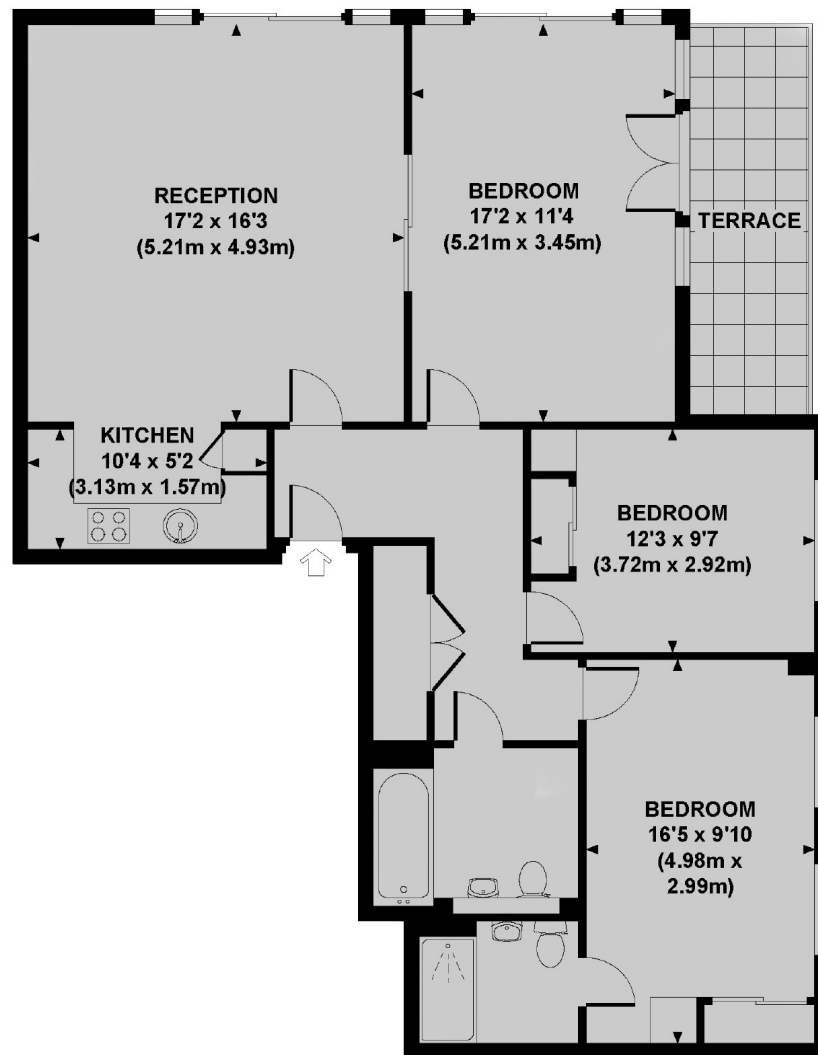
This three double bedroom, two bathroom modern apartment has a generously sized open-plan reception room, a private patio garden and is ideally suited to professionals looking for a highly convenient location.

Situated in the desirable St. William's Court which offers a fully equipped gym, sauna, steam room and 24 hr concierge and well positioned for King's Cross St. Pancras station and Caledonian Road.

### Features

- Three Double Bedrooms
- Two Bathrooms
- Spacious Living Space
- Private Patio
- Modern Development
- Close to King's Cross Station

## Gifford Street, London, N1



GROUND FLOOR

### ST. WILLIAMS COURT, GIFFORD STREET, N1

Approx. gross internal area  
1049 Sq Ft. / 97.4 Sq M.

#### Contact

To arrange a viewing call our office on the number below or visit our website.



Energy Rating: C. We aim to make our particulars both accurate and reliable. However they are not guaranteed; nor do they form part of an offer or contract. If you require clarification on any points then please contact us, especially if you're traveling some distance to view. Please note that appliances and heating systems have not been tested and therefore no warranties can be given as to their good working order.