



Morton Road, N1

£775 Per week

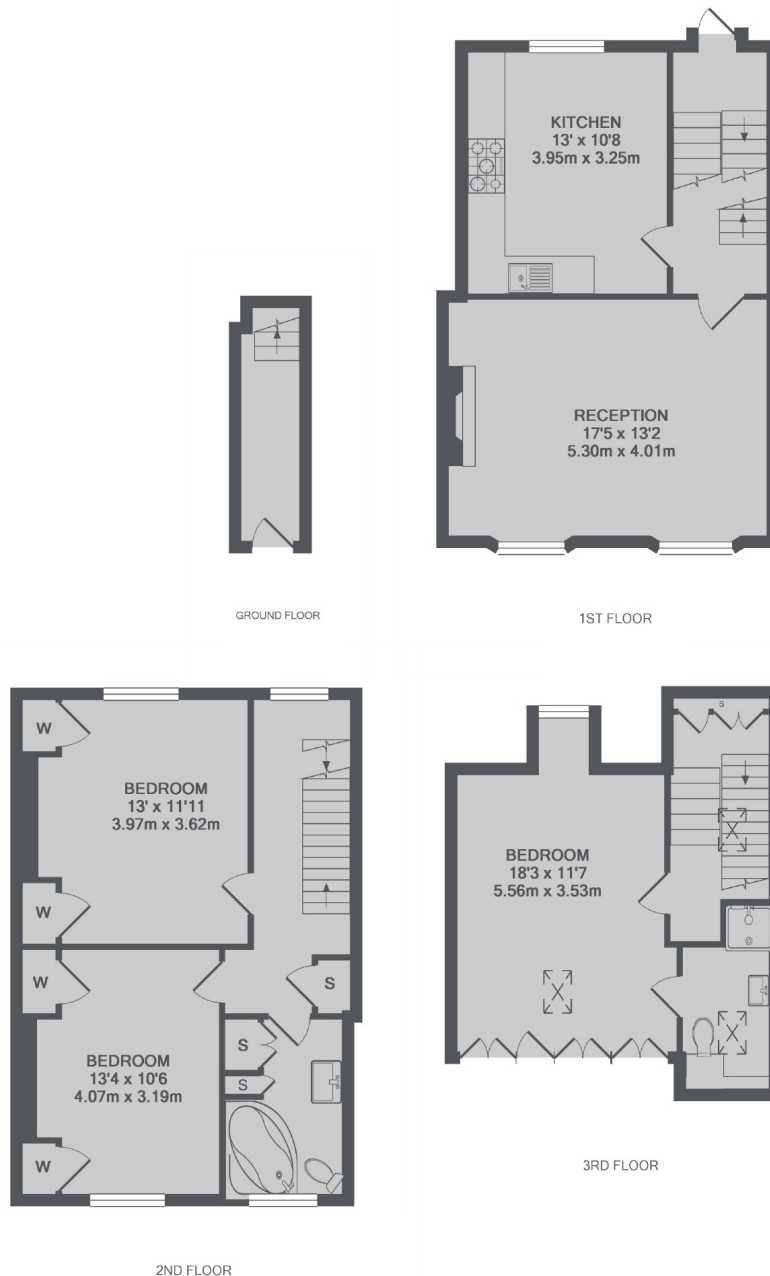
This three double bedroom, two bathroom period maisonette has a large private landscaped garden and terrace, great living space and is presented to a high standard throughout.

Morton Road is close to Essex Road station and also within easy reach of both Angel and Highbury & Islington tube stations as well as the shops, bars, restaurants and shopping amenities of Upper Street.

Features

- Three Double Bedrooms
- Two Bathrooms
- Large Private Garden
- Kitchen/Diner
- Period Property
- Beautifully Presented

Morton Road, London, N1



TOTAL APPROX. FLOOR AREA 1268 SQ.FT. (117.8 SQ.M.)

Contact

To arrange a viewing call our office on the number below or visit our website.



Energy Rating: E. We aim to make our particulars both accurate and reliable. However they are not guaranteed; nor do they form part of an offer or contract. If you require clarification on any points then please contact us, especially if you're traveling some distance to view. Please note that appliances and heating systems have not been tested and therefore no warranties can be given as to their good working order.