

Islington, N1

£495 Per week

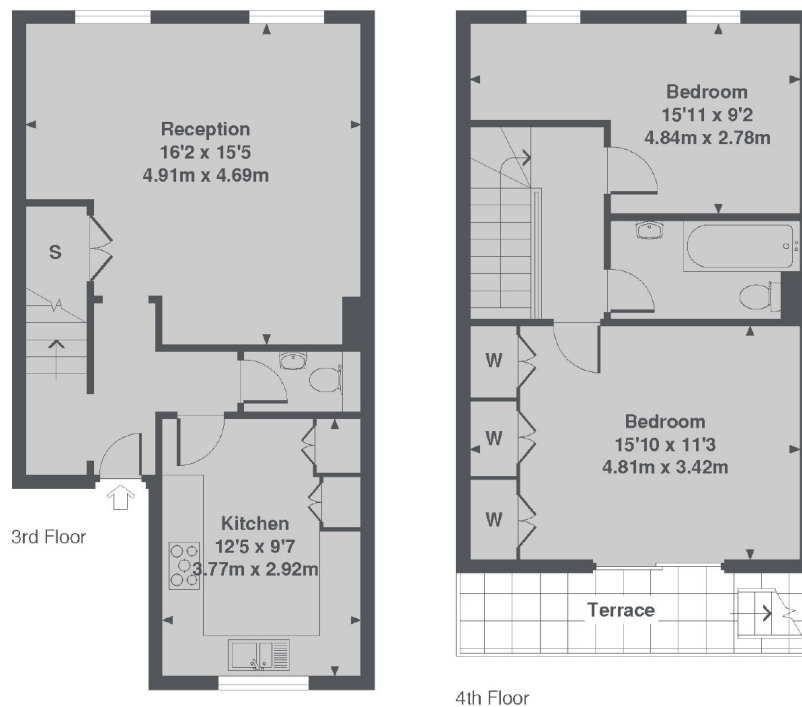
A large two double bedroom flat set over two floors close to Highbury and Islington with excellent natural light and carpet throughout. It is furnished, has well sized rooms and a terrace with views over London.

On the doorstep you have Highbury and Islington station. As well as that you have a range of shops, bars, restaurants and amenities that Upper Street has to offer.

Features

Period Conversion
Double Bedrooms
Private Terrace
Furnished
Separate Kitchen
Highbury and Islington

Upper Street, London, N1



Upper Street, N1

Total Approx. Floor area 850 Sq. Ft. (79.0 Sq. M.)

Contact

To arrange a viewing call our office on the number below or visit our website.



Energy Rating: C. We aim to make our particulars both accurate and reliable. However they are not guaranteed; nor do they form part of an offer or contract. If you require clarification on any points then please contact us, especially if you're traveling some distance to view. Please note that appliances and heating systems have not been tested and therefore no warranties can be given as to their good working order.