



Stonefield Street, N1

£550 Per week

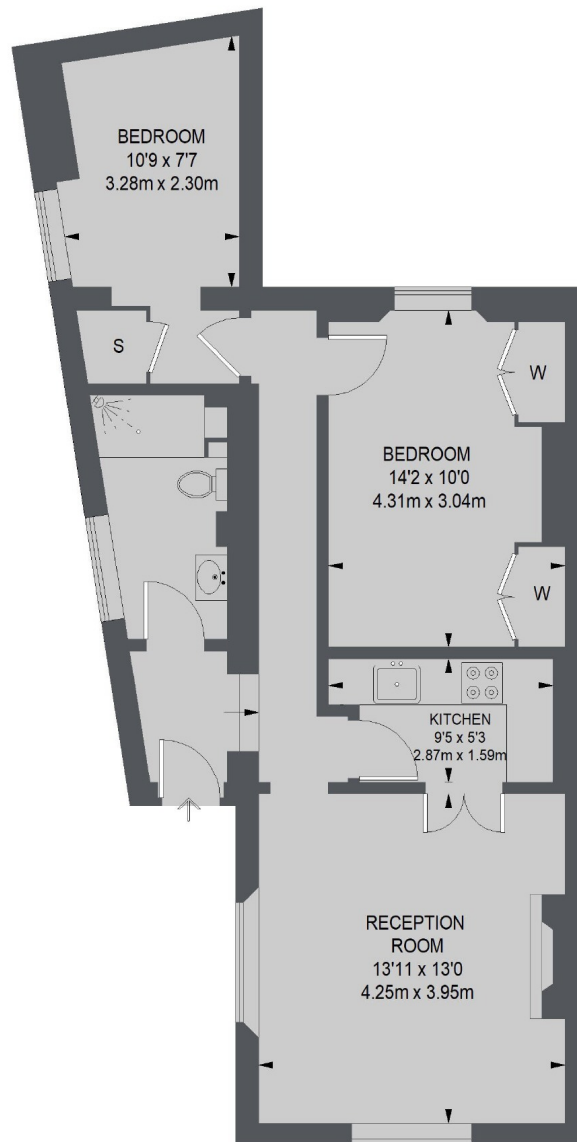
A beautifully presented period property in an excellent location in the heart of Angel. The property benefits from a private entrance and comprises a modern kitchen, bathroom, semi open plan reception room and two double bedroom.

Conveniently located for the amenities of Islington's Upper Street (0.1 Miles approx.) Angel Underground Station can be found a short walk away (0.4 Miles approx.) Highbury and Islington Station is also close by.

Features

- Private Entrance
- Newly Renovated
- High Ceiling
- Modern Bathroom
- Built in Storage

Stonefield Street, London, N1



TOTAL APPROX. FLOOR AREA 656 SQ. FT. (60.99 SQ. M.)

Contact

To arrange a viewing call our office on the number below or visit our website.



Energy Rating: E. We aim to make our particulars both accurate and reliable. However they are not guaranteed; nor do they form part of an offer or contract. If you require clarification on any points then please contact us, especially if you're traveling some distance to view. Please note that appliances and heating systems have not been tested and therefore no warranties can be given as to their good working order.