

Baldwin Terrace, N1

£695 Per week

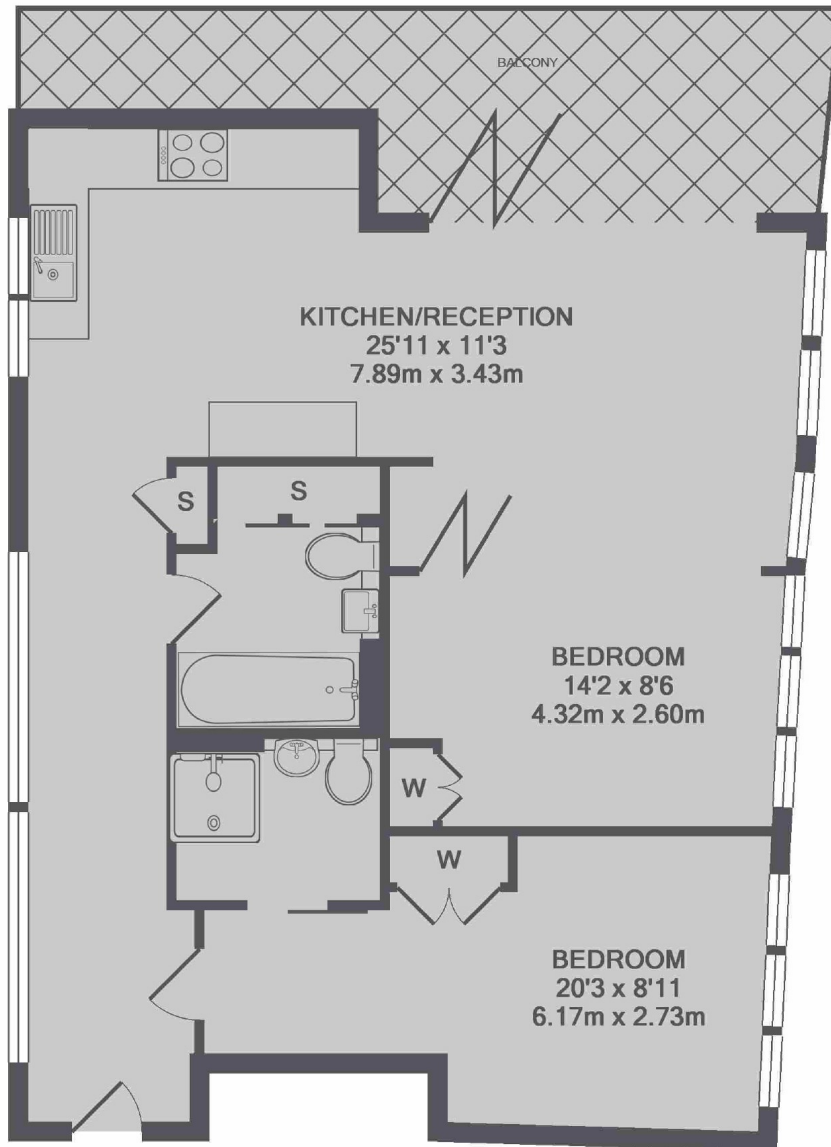
A two bedroom penthouse apartment with a private terrace with views over Regent's canal and the City Of London. This flat offers great storage and more interior throughout, air conditioning, flexible open plan living with bi-folding.

Baldwin Terrace is a short walk to Angel Station and only a 15 minute walk into the City. The apartment is close to the many shops and amenities which Upper Street has to offer.

Features

Two Bathroom
Two Bedroom
Modern
Private Terrace

Baldwin Terrace, London, N1



TOTAL APPROX. FLOOR AREA 778 SQ.FT. (72.3 SQ.M.)

Contact

To arrange a viewing call our office on the number below or visit our website.



Energy Rating: C. We aim to make our particulars both accurate and reliable. However they are not guaranteed; nor do they form part of an offer or contract. If you require clarification on any points then please contact us, especially if you're traveling some distance to view. Please note that appliances and heating systems have not been tested and therefore no warranties can be given as to their good working order.