

Islington, N1

£550 Per week

This brand new two bedroom apartment is on the third floor of one of Islington's latest developments. With two double bedrooms and living room leading to large private balcony this is perfect for professional tenants.

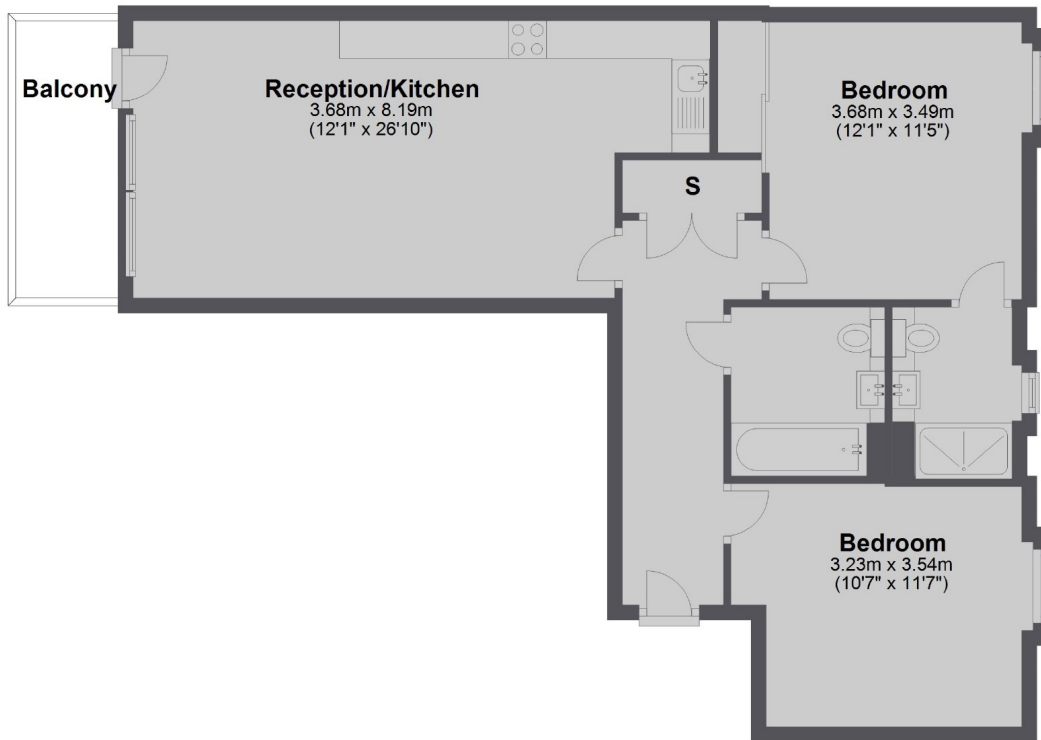
Situated adjacent to the canal and nestled between Packington Street and Arlington Avenue, the location is ideal for access to Angel station and the amenities along Upper Street

Features

- Brand New Development
- Two Bedrooms
- Concierge
- Close To Angel Station
- Two Bathrooms
- Open Plan Kitchen

Packington Square, London, N1

Third Floor



Total area: approx. 71.3 sq. metres (767.7 sq. feet)

Contact

To arrange a viewing call our office on the number below or visit our website.



Energy Rating: B. We aim to make our particulars both accurate and reliable. However they are not guaranteed; nor do they form part of an offer or contract. If you require clarification on any points then please contact us, especially if you're traveling some distance to view. Please note that appliances and heating systems have not been tested and therefore no warranties can be given as to their good working order.