

Richmond Avenue, N1

£650 Per week

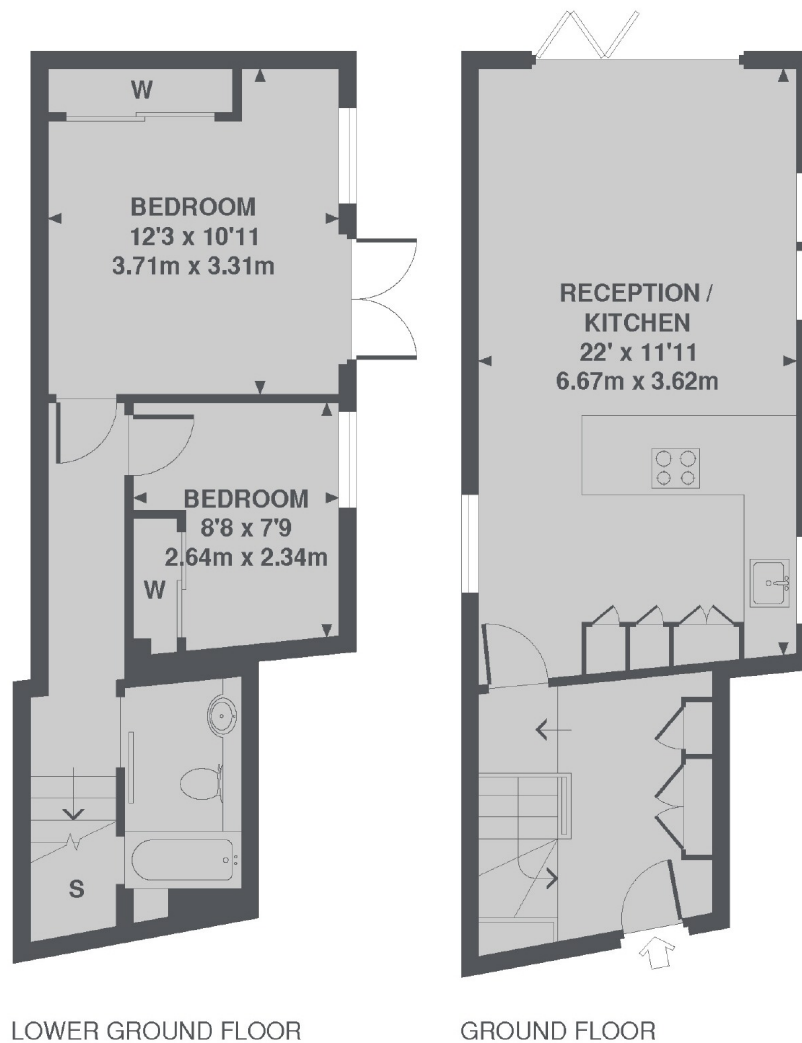
This ground and lower ground period flat has an large reception room, with a open plan kitchen, two bedrooms, a modern bathroom, a private garden and also a separate entrance.

The property is located in the Barnsbury Conservation area. Angel and Highbury & Islington Underground stations around a half mile away with Kings Cross two thirds of a mile away.

Features

- Two Bedrooms
- Conservation Area
- Private Garden
- Period Conversion
- Close to Kings Cross
- Split Level

Richmond Avenue, London, N1



TOTAL APPROX. FLOOR AREA 666 SQ. FT. (61.9 SQ. M.)

Contact

To arrange a viewing call our office on the number below or visit our website.



Energy Rating: D. We aim to make our particulars both accurate and reliable. However they are not guaranteed; nor do they form part of an offer or contract. If you require clarification on any points then please contact us, especially if you're traveling some distance to view. Please note that appliances and heating systems have not been tested and therefore no warranties can be given as to their good working order.