



## Almorah Road, N1

£725 Per week

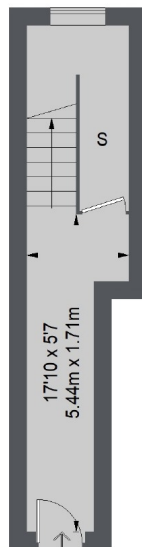
A truly stunning two double bedroom split level flat in a charming period conversion with a private garden. The owners have designed and refurbished the property to the highest standards. Perfect for professional tenants.

Almorah Road is close to Essex Road station and also within easy reach of both Angel and Highbury & Islington tube stations as well as the shops, bars, restaurants and shopping amenities of Upper Street.

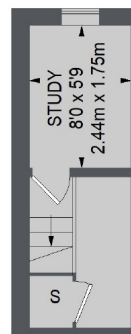
### Features

- Stunning Period Conversion
- Two Double Bedrooms
- Private Garden
- Parquet Wood Floors
- Private Entrance
- Separate Kitchen

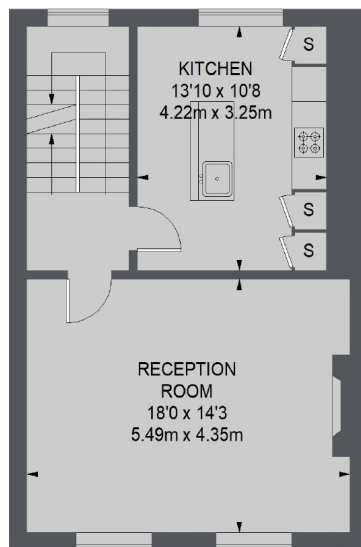
## Almorah Road, London, N1



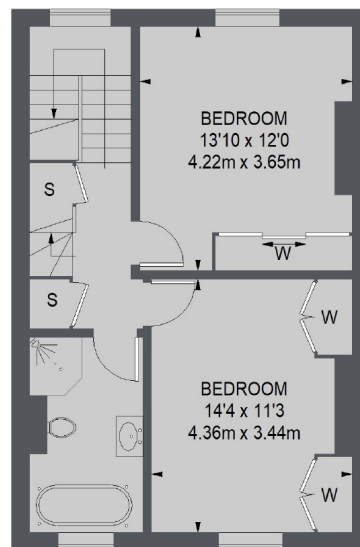
**RAISED GROUND FLOOR**



**THIRD FLOOR**



**FIRST FLOOR**



**SECOND FLOOR**

**TOTAL APPROX. FLOOR AREA**  
1257 SQ. FT. (116.74 SQ. M.)

### Contact

To arrange a viewing call our office on the number below or visit our website.



Energy Rating: D. We aim to make our particulars both accurate and reliable. However they are not guaranteed; nor do they form part of an offer or contract. If you require clarification on any points then please contact us, especially if you're traveling some distance to view. Please note that appliances and heating systems have not been tested and therefore no warranties can be given as to their good working order.