



## Bryantwood Road, N7

£650 Per week

A unique split level apartment in a pub conversion with two double bedrooms plus a study and two modern bathrooms. It has been finished to an exceptional standard, has a terrace at the rear and huge amounts of storage.

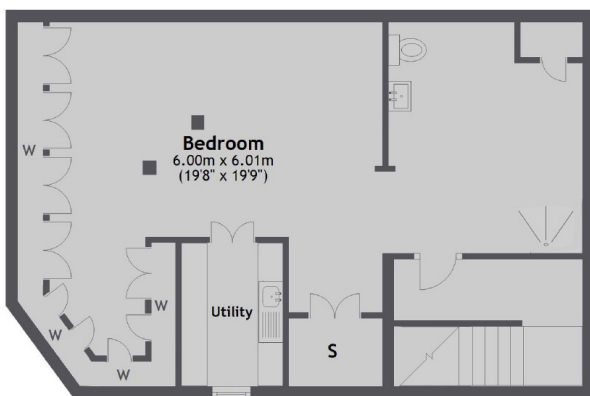
Bryantwood Road is just moments from Drayton Park station with Holloway Road station also a couple of minutes walk away. It is close to the open spaces of Highbury Fields, plus all the amenities of Upper Street and Holloway Road.

### Features

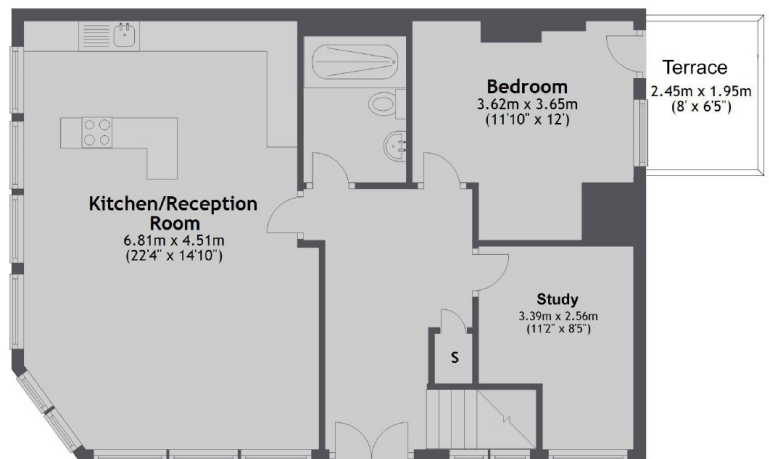
- Two Bedrooms
- Study
- Split Level Conversion
- Two Bathrooms
- Terrace
- Pet Friendly

## Bryantwood Road, London, N7

Lower Ground Floor



Ground Floor



Total area: approx. 125.1 sq. metres (1346.1 sq. feet)

### Contact

To arrange a viewing call our office on the number below or visit our website.



Energy Rating: . We aim to make our particulars both accurate and reliable. However they are not guaranteed; nor do they form part of an offer or contract. If you require clarification on any points then please contact us, especially if you're traveling some distance to view. Please note that appliances and heating systems have not been tested and therefore no warranties can be given as to their good working order.